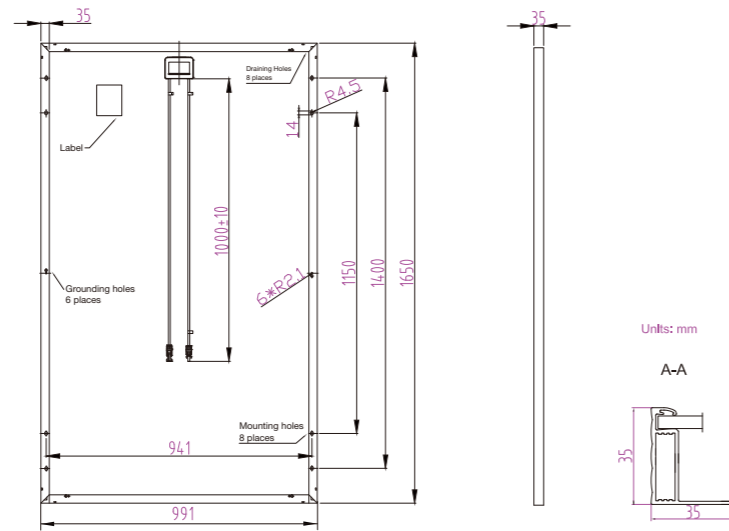
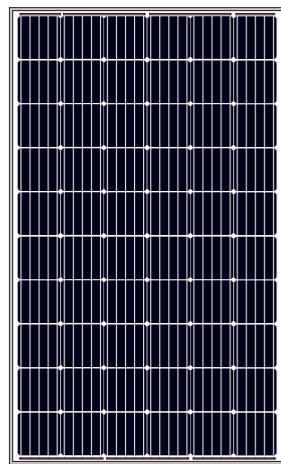


MECHANICAL DIAGRAM



SPECIFICATIONS

Cell	Mono 156.75x156.75mm
Weight	18.2kg±3%
Dimensions	1650×991×35mm
Cable Cross Section Size	4mm ² (12AWG)
No. of cells	60 (6×10)
Junction Box	IP67, 3 diodes
Connector	Amphenol UTX
Packaging Configuration	30 Per Pallet

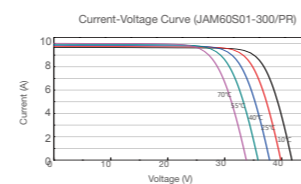
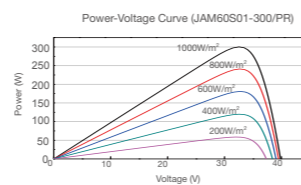
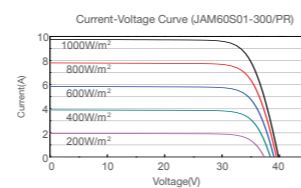
OPERATING CONDITIONS

Maximum System Voltage	1000V DC (UL)
Operating Temperature	-40°C~+85°C
Maximum Series Fuse	20A
Maximum Static Load, Front Maximum Static Load, Back	5400Pa (112lb/ft ²) 2400Pa (50lb/ft ²)
NOCT	45±2°C
Fire Performance	Type 1

ELECTRICAL PARAMETERS AT STC

TYPE	JAM60S01 -285/PR	JAM60S01 -290/PR	JAM60S01 -295/PR	JAM60S01 -300/PR	JAM60S01 -305/PR
Rated Maximum Power (Pmax) [W]	285	290	295	300	305
Open Circuit Voltage (Voc) [V]	39.25	39.46	39.64	39.85	40.05
Maximum Power Voltage (Vmp) [V]	31.70	31.80	32.03	32.26	32.57
Short Circuit Current (Isc) [A]	9.46	9.57	9.66	9.75	9.85
Maximum Power Current (Imp) [A]	8.99	9.12	9.21	9.30	9.37
Module Efficiency [%]	17.43	17.74	18.04	18.35	18.65
Power Tolerance	-0~+5W				
Temperature Coefficient of Isc (α _{Isc})	+0.060%/°C				
Temperature Coefficient of Voc (β _{Voc})	-0.300%/°C				
Temperature Coefficient of Pmax (γ _{Pmp})	-0.390%/°C				
STC	Irradiance 1000W/m ² , cell temperature 25°C, AM 1.5G				

CHARACTERISTICS



ELECTRICAL PARAMETERS AT NOCT

TYPE	JAM60S01 -285/PR	JAM60S01 -290/PR	JAM60S01 -295/PR	JAM60S01 -300/PR	JAM60S01 -305/PR
Max Power (Pmax) [W]	209	213	217	221	224
Open Circuit Voltage (Voc) [V]	36.11	36.34	36.57	36.75	36.95
Max Power Voltage (Vmp) [V]	29.37	29.56	29.63	29.69	29.90
Short Circuit Current (Isc) [A]	7.53	7.61	7.69	7.78	7.86
Max Power Current (Imp) [A]	7.13	7.21	7.32	7.43	7.50
NOCT	Irradiance 800W/m ² , ambient temperature 20°C, wind speed 1 m/s, AM 1.5G				

305W Mono Si 60Cells

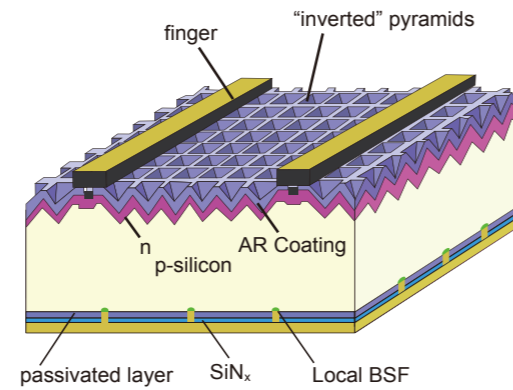


Harvest the Sunshine
Premium Cells, Premium Modules

Percium Cell

- The mono cell technology with passivated backside and local BSF
- >21% average mass production efficiency

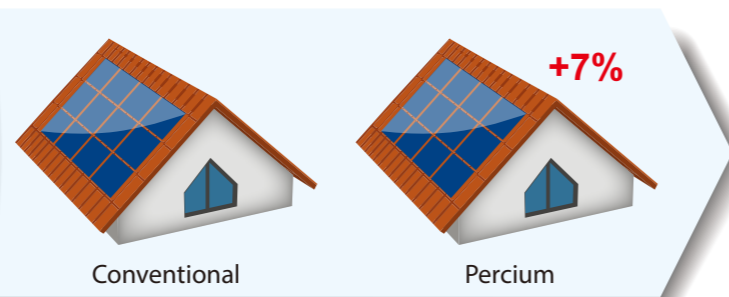
Average Mass Production Efficiency >21%



More Power Per m²

Higher conversion efficiency - more power production per unit area

Benefit: 7% More Power



Percium module 300Wp VS Conventional module 280Wp

Lower System Cost

Higher conversion efficiency help you save

- Transportation cost
- Installation cost
- BOS cost

Benefit: Save System Costs Per Watt

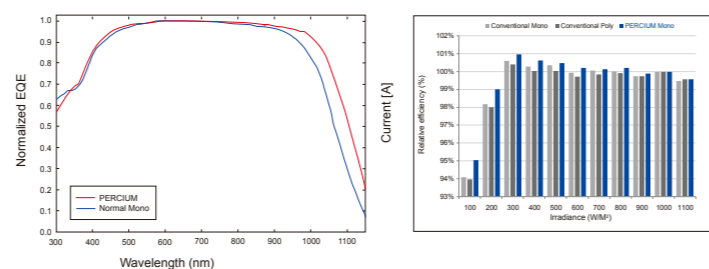


Cost saving estimation made by comparison between 280W and 300W modules

Excellent Low-light Performance

Enhanced spectral response at longer wavelength boosts low-light performance, which can produce more than 3% additional power compared with conventional module at system side.

Benefit: Excellent Low-light Performance



EQE—External quantum efficiency Relative module efficiency comparison under different irradiance

Source: TÜVRheinland

High Reliability

- Long-term reliability tests
- Harsh climate environment endurance tests
- PID-resistance tests
- Certified by TÜV SÜD and ETL
- Industry-leading cell technology
- High quality components from best suppliers
- Manufacturing inspected and certified by PI-Berlin and Solar-IF
- 100% in-house automatic manufacturing



Other Features

- Positive power tolerance: 0~+5W
- Modules binned by current to improve system performance
- Excellent mechanical load resistance: Certified to withstand high wind loads (2400Pa) and snow loads (5400Pa)

Comprehensive Certificates

- IEC 61215, IEC 61730, UL1703, CEC Listed, MCS and CE
- ISO 9001: 2008: Quality management systems
- ISO 14001: 2004: Environmental management systems
- BS OHSAS 18001: 2007: Occupational health and safety management systems
- Environmental policy: The first solar company in China to complete Intertek's carbon footprint evaluation program and receive green leaf mark verification for our products



Specifications subject to technical changes and tests. JA Solar reserves the right of final interpretation.

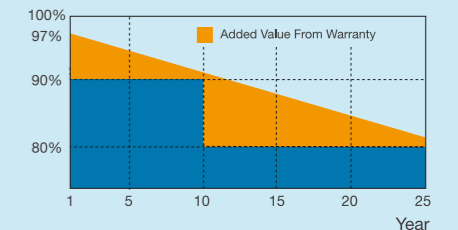
JA Solar Holdings Co., Ltd.

JA Solar Holdings Co.,Ltd is a world leading manufacturer of high-performance solar power products that convert sunlight into electricity for residential, commercial and utility-scale power generation. The company was founded in May 2005 and publicly listed on NASDAQ in February 2007. JA Solar has been the world's leading cell producer since 2010, and has firmly established itself as a tier 1 module supplier since 2012. Capitalizing on our strength in solar cell technology, we are committed to provide modules with unparalleled conversion efficiency, yield efficiency, and reliability to enable you to maximize your returns on PV projects. With its leading industry experience, continuous effort on R&D, customer-oriented service and solid financial status, JA Solar is your best choice of long-term trustworthy partner.

Add: Building No.8, Nuode Center, Automobile Museum East Road, Fengtai District, Beijing, China
Tel: +86 (10) 63611888
Fax: +86 (10) 63611999
Email: sales@jasolar.com market@jasolar.com

Product Warranty

- 12-year product warranty
- 25-year linear power warranty



Additional Insurance Options



Partner Section