



# User Manual

- NAV-LCx-P2
- NAV-LCx-P2H



Figure 1

### Activation of video sources:



Long press to activate video sources



Return to OEM Display

### Picture In Picture (PIP) mode:



Activation: Long Press of Hang Up button on SWC



Deactivation: Long Press of Hang Up button on SWC

### Other Steering Wheel Control buttons:



Phone Answer button: Returns to OEM Phone Screen



Voice Control button: Returns to OEM Voice Screen

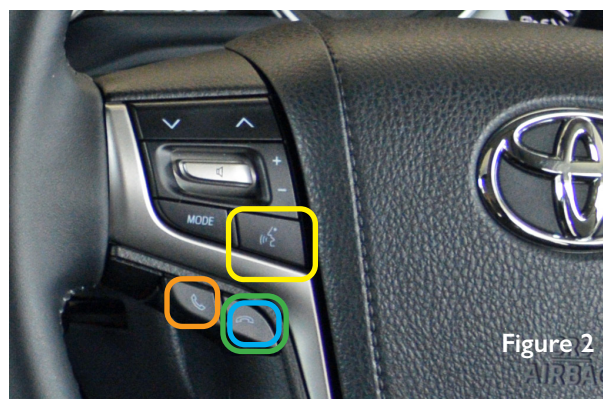


Figure 2

### Climate Control Buttons



Some of the Climate buttons will show on the drop down when on the AV1 or Navigation sources. These are as indicated below:



Buttons that will drop down



Buttons that will not drop down



To access the Climate Menu from the AV1 or NAVI, return to the factory screen (using the OEM buttons as shown in Figure 1). E.g. press Home, and once on the factory screen, press Climate and the screen will appear (Figure 4).

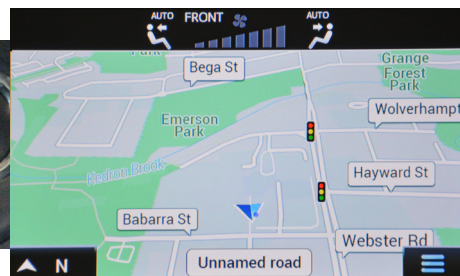


Figure 3



Figure 4

## Activation/Deactivation of Caravan Camera in Reverse

### To Activate the Caravan Camera:

- Turn the car on and wait for the system to boot up.
- Put the vehicle in reverse. The system should default to the factory reverse camera.
- While in Reverse, long press the NAV button for 4 seconds.

### To Deactivate the Caravan Camera:

- Turn the car on and wait for the system to boot up.
- Put the vehicle in reverse. The system should display the Caravan Camera.
- While in reverse, long press the NAV button for 4 seconds. This will automatically change back to the navigation screen.
- Take the vehicle out of reverse, e.g. put in Park. The system should now default back to the reverse camera.

Watch a video of how to activate/deactivate:



Figure 5



Figure 6

### \*\*\*FOR VEHICLES WITH 360 DEGREE CAMERA\*\*\*

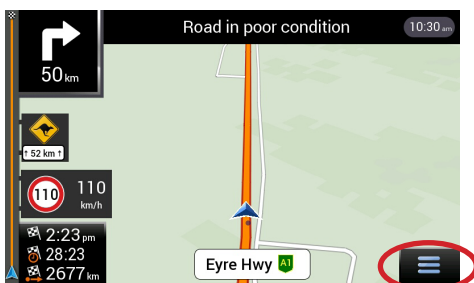
When using the RTC Function (Caravan Camera Override), it is important to first deactivate any of the vehicle's factory cameras that are set to **AUTO**.

If one or more of the camera views are set to **AUTO**, this will result in strange camera functionality when moving through the gears.

**To deactivate the AUTO function:** Press the **VIEW** button behind the left side of the steering wheel (Figure 5). Ensure that the **AUTO** icon at the bottom right of the touch screen on both camera screens is OFF as shown (Figure 6).

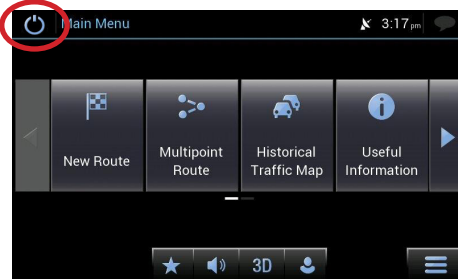
## How to Switch Navigation Sources

### How to access Hema 4WD Nav:



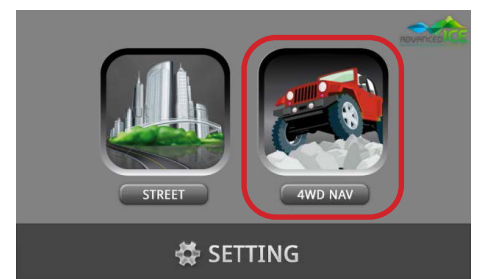
#### Step 1:

The first time you activate the system it will boot to the street nav as default. To switch to Hema, click on the Menu icon.



#### Step 2:

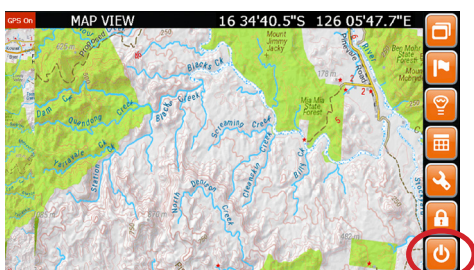
Select the Exit button at the top left of the screen. The Navigation Selection Screen will appear.



#### Step 3:

You have 5 seconds to select 4WD Nav before it automatically reboots to Street Nav. Once selected, Hema 4WD Nav will begin to load.

### How to return to Street Nav:



#### Step 1:

Press the Exit button in the bottom right of the Hema Menu



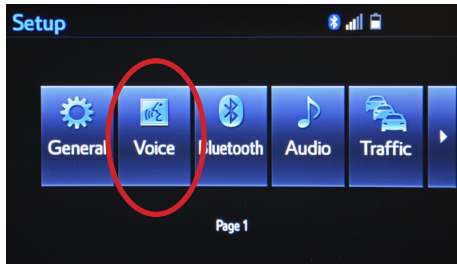
#### Step 2:

The Navigation Selection Screen will appear. You have 5 seconds to select Street, before it automatically reboots to Hema. Once selected, Street Nav will begin to



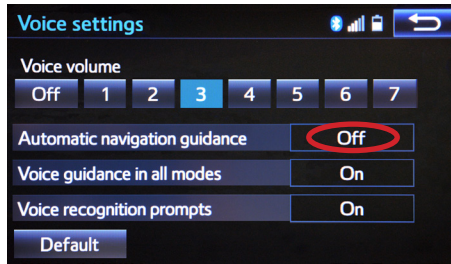
## How to Turn Off Factory Navigation Commands

*Please note: If Hema only navigation is being installed, they will not require this setting to be changed.*



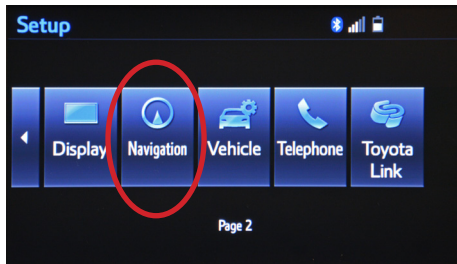
### Step 1:

Access the *Setup* menu and select the *Voice* option on page 1 of the menu.



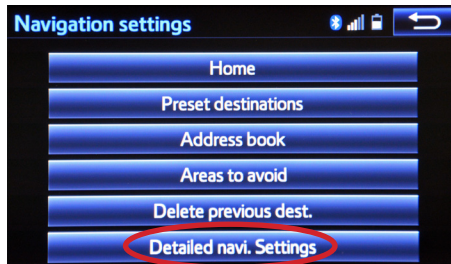
### Step 2:

Click to turn OFF *Automatic Navigation Guidance*.



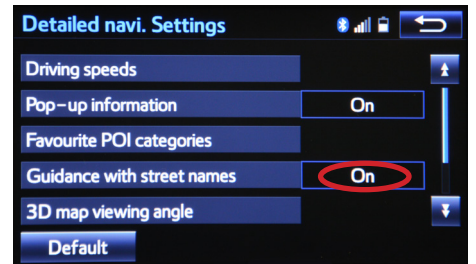
### Step 3:

Go back to the *Setup* menu and select the *Navigation* option on page 2 of the Setup menu.



### Step 4:

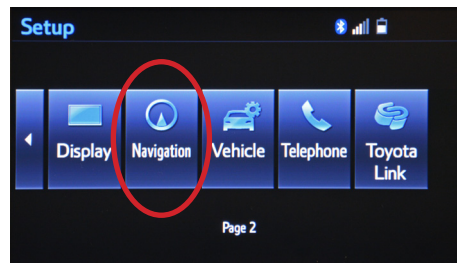
Select the *Detailed navi. Settings* option of the *Navigation Settings* page.



### Step 5:

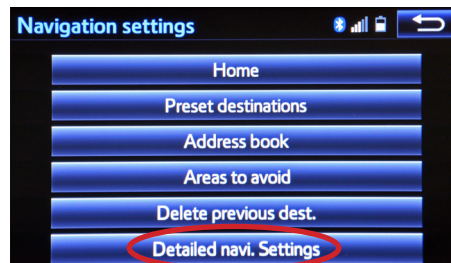
At the top of the *Detailed navi. Settings* menu, you will see the *Guidance with street names* setting. Click to turn OFF.

## How to Calibrate the Factory Navigation



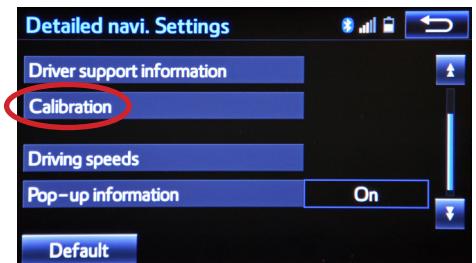
### Step 1:

Access the *Setup* menu and select the *Navigation* option on page 2 of the Setup menu.



### Step 2:

Select the *Detailed navi. Settings* option of the *Navigation Settings* page.

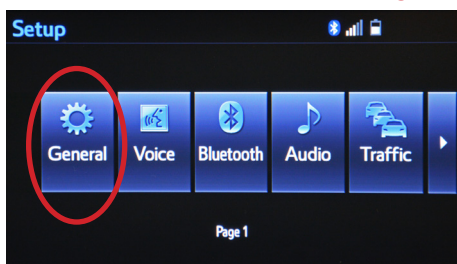


### Step 3:

Towards the bottom of the *Detailed navi. Settings* menu, click on the *Calibration* option to calibrate device.

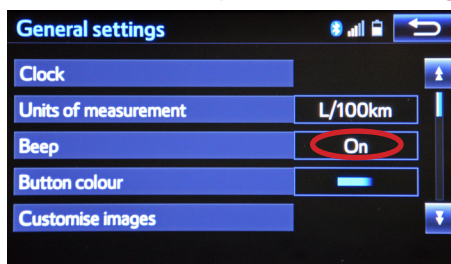
## How to Turn ON/OFF Factory Beeps

*Please note: This setting is for vehicles with the optional 1385 Navigation Override module installed.*



### Step 1:

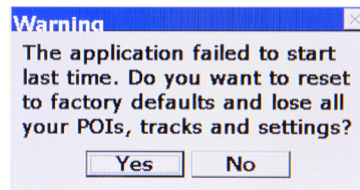
Access the *Setup* menu and select the *General* option on page 1 of the Setup menu.



### Step 2:

There you will see the *Beep* setting. Click to the right to change from ON/OFF.

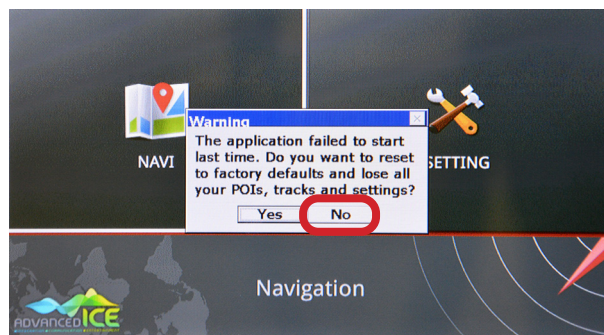
**Q1. When I enter the navigation, a message appears saying:**



**Answer:** On occasion, due to voltage drop when starting the engine, this error message may display. If you get this message, you need to **press “NO”** (Figure 7) and then the system will automatically restart and continue to function normally.

**\*\*\*If you have pressed “YES” all your settings will be reset and the error message will continue to display each time you start the navigation until you press “NO”**

**Due to the size of the button and the touch screen calibration being slightly out, some customers have reported that you may need to press just below the “NO” button for it to work.\*\*\***



**Figure 7**

## Navigation Instructional Videos

### Premium Street Navigation:

We have many videos on how to use our Premium Street Navigation System. Use the link to visit our YouTube Channel and learn more about how to use our Navigation.



### Hema 4WD Nav:

There are many videos on how to use and customise your Hema 4WD Nav. Use the link to visit Hema's Knowledgebase and view Video Tutorials. To find the videos suitable for your device, refer to the “OziExplorer 4WD” section.

