

## GM 6.5L DS Pump Application Information



On the GM 6.5L diesel engine with an electronically controlled DS injection pump, two different injection pumps are used in the 1994 model year. Use of the incorrect pump will cause engine performance problems including; slow acceleration, low power, running rough, and smoking.

### DT650003R Injection Pump Applications

1994 light duty pickup truck, van and cab chassis. The eighth digit of the VIN is S and the engine RPO is L56.

1995 – 2003 all light duty and heavy duty pickup truck, van, and cab chassis.

### DT650004R Injection Pump Applications

1994 heavy duty, pickup truck, van and cab chassis. The eighth digit of the VIN is F and the engine RPO is L65. Note that some of these trucks were modified to use the DT650003R pump by changing the PCM calibration PROM.

To confirm what pump is needed on 1994 GM 6.5L vehicles request the injection pump part number information from the customer. If this information is not available the PROM ID must be obtained from the vehicle using an appropriate scan tool. The PROM ID to be used with the DT650004R pump is listed in GM bulletin 08-06-04-031.

Installation of the incorrect injection pump and PROM can be verified by checking the injection pump fuel rates at idle speed. Normal fuel rates are 8-15 mm<sup>3</sup> at idle. A very low or high fuel rate is an indicator of an injection pump and PROM mismatch or a fuel quality problem.

### Cross Reference Numbers

#### DT650003R Injection Pump

GM: 10225930, 12558156, 12561307, 12561405, 17800077, 17800114, 19208315, 19208317, and 19209059.

Stanadyne: DS4831-5067, DS4831-5288, DS4831-5459, DS4831-5521, and DS4831-5942.

#### DT650004R Injection Pump

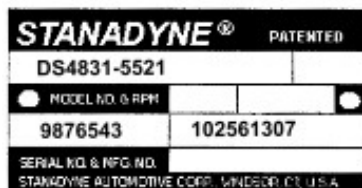
GM: 10225929, 1255816, 17800076, 17800113, and 19208316

Stanadyne: DS4831-5068 and DS4831-5941.

*An Employee Owned Company*

12693 Old Virginia Road  
Reno, NV 89521  
800.648.4720

DIPACODTECH.com



← Stanadyne Number

← GM Number