



Advancing the Power of the Sun

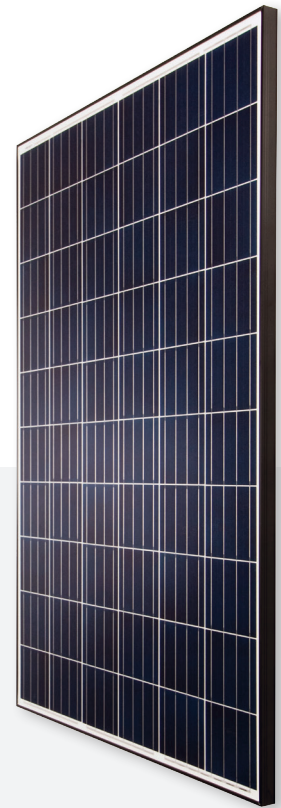
60 Cell Poly
250-270W

BVM6610P

0~+5W
Power Tolerance

16.6%
Maximum Efficiency

250-270W
Power Output Range



39.06 x 64.57 Inches
Black Frame / White Backsheet



High Quality and Reliable Modules

- ◆ Withstand up to 5400 Pa snow load and 2400 Pa wind load
- ◆ 1000V DC (UL)
- ◆ 3 EL inspections per cell/module for defect-free consistency
- ◆ Type 1 fire-rating per UL 1703 edition 3
- ◆ High salt and ammonia resistance certified by TUV Rheinland
- ◆ 0-+5 W guaranteed positive tolerance
- ◆ Rugged design for long-term durability; passed extended reliability tests



Warranty

- ◆ 12-year product warranty
- ◆ 25-year linear power output warranty



Comprehensive Certificates for Products and Management

- ◆ UL 1703, IEC 61215, IEC 61730, CEC listed, MCS and CE
- ◆ ISO 9001 for Quality Management Systems
- ◆ ISO 14001 for Environmental Management Systems



Boviet Solar USA ◆ 1740 Technology Dr., Suite 205 ◆ San Jose, CA 95110

BOVIETSOLARUSA.COM ◆ 877.253.2858 ◆ SALES@BOVIETSOLARUSA.COM

Electrical Characteristics STC					
	BVM6610P-250	BVM6610P-255	BVM6610P-260	BVM6610P-265	BVM6610P-270
Maximum Power (Pmax)	250W	255W	260W	265W	270W
Maximum Power Current (Imp)	8.28A	8.39A	8.50A	8.61A	8.71A
Maximum Power Voltage (Vmp)	30.2V	30.4V	30.6V	30.8V	31.0V
Short Circuit Current (Isc)	8.79A	8.88A	8.98A	9.07A	9.16A
Open Circuit Voltage (Voc)	37.5V	37.7V	37.9V	38.1V	38.3V
Module Efficiency	15.4%	15.7%	16.0%	16.3%	16.6%
Power Tolerance	0~+5W	0~+5W	0~+5W	0~+5W	0~+5W
STC: AM1.5, Irradiance 1000W/m ² , 25°C					

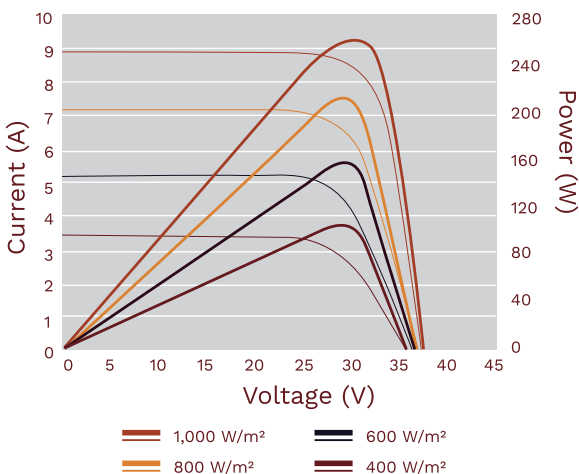
Electrical Characteristics NOCT					
	BVM6610P-250	BVM6610P-255	BVM6610P-260	BVM6610P-265	BVM6610P-270
Maximum Power (Pmax)	187W	189W	194W	197W	201W
Maximum Power Current (Imp)	6.61A	6.66A	6.78A	6.85A	6.93A
Maximum Power Voltage (Vmp)	28.3V	28.4V	28.6V	28.8V	29.0V
Short Circuit Current (Isc)	7.00A	7.06A	7.13A	7.25A	7.32A
Open Circuit Voltage (Voc)	34.8V	35.0V	35.3V	35.7V	36.0V
NOCT: AM1.5, Irradiance 800W/m ² , 20°C, Wind speed 1m/s					

Mechanical Characteristics		Thermal Characteristics	
Solar Cell	Polycrystalline 6.14 x 6.14 inch, 60 (6 x 10) pcs. in series	Pmax Temperature Coefficient	-0.43%/K
Glass	High transparency, low iron, tempered glass 3.2 mm (0.13 inch)	Voc Temperature Coefficient	-0.33%/K
Frame	Anodized aluminum alloy	Isc Temperature Coefficient	+0.05%/K
Junction Box	IP67 rated, with 3 bypass diode	NOCT	113±3.6°F
Output Cable	4 mm ² (EU)/12 AWG (US), 43.30/47.244 inch		
Connector	MC4 compatible		
Dimension	64.57 x 39.06 x 1.57 inch		
Weight	40.79 lb		

Maximum Ratings		Packing Information	
Operating Temperature	-40°F~185°F	Pieces per pallet	26
Maximum Series Fuse Rating	15A	Pallets per container (40HQ)	28
Maximum System Voltage	1000V DC	Pieces per container (40HQ)	728
		Pallet weight/size	1177.3 lb/66.77 x 44.25 x 44.68 inch

Specifications in this datasheet are subject to change without prior notice.

I-V Curves at Different Irradiances (260W)
Test Temperature: 25°C



Irradiance: AM 1.5, 1,000W/m² (260W)

