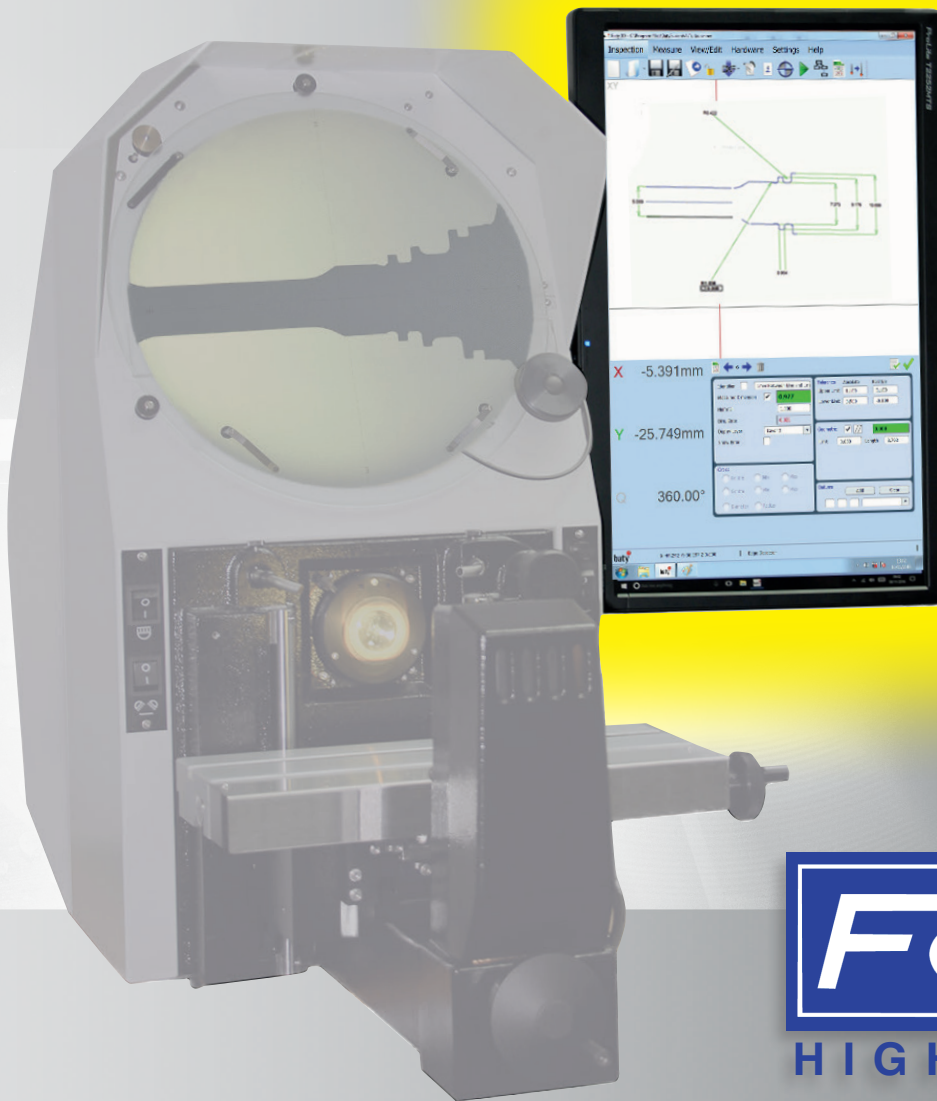


# Huge Savings!

**Don't buy new - RETROFIT!**

With our retrofit program you can dramatically enhance the functionality of your current optical comparator. Upgrades include:

- 22" touch screen
- Intel NUC mini PC
- Fusion FT2-E metrology software
- Edge sensor
- Fast data point acquisition
- Entire system is plug and play
- Comprehensive Reporting
- Best fitting of profile data to imported DXF files



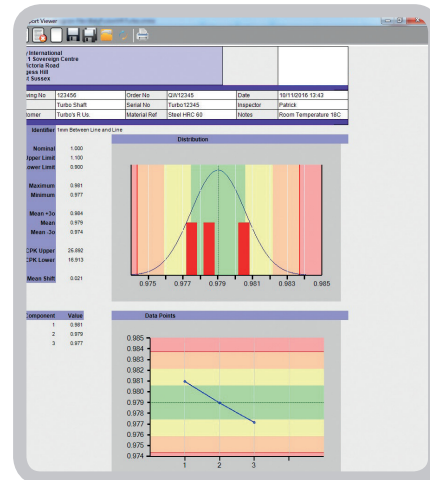
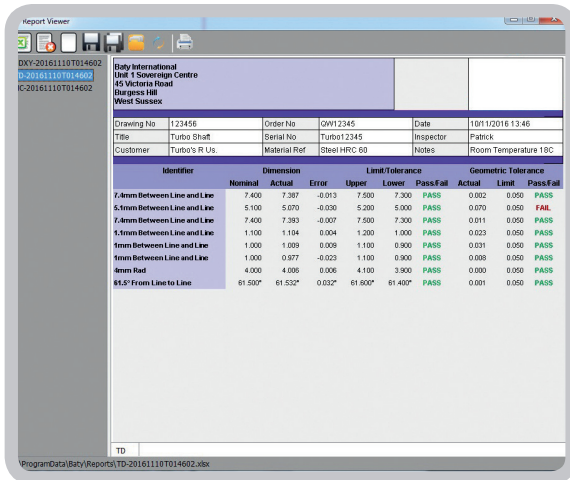
**Fowler**<sup>®</sup>  
HIGH PRECISION

# OPTICAL COMPARATOR RETROFIT OFFER

## Improved comparator functionality with minimal costs

The functionality, accuracy and usability of the optical comparator can now be dramatically enhanced without incurring high costs. With the implementation of the Fusion Inspection Software and the use of a touch screen monitor we have created a new retrofit package which can be fitted with ease to many comparators (listed on back).

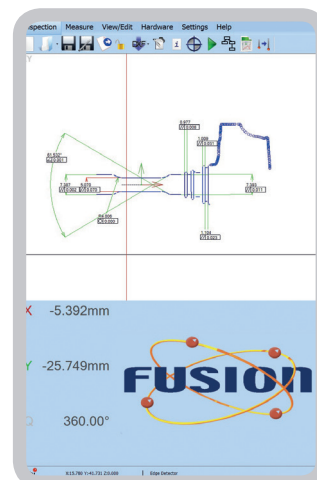
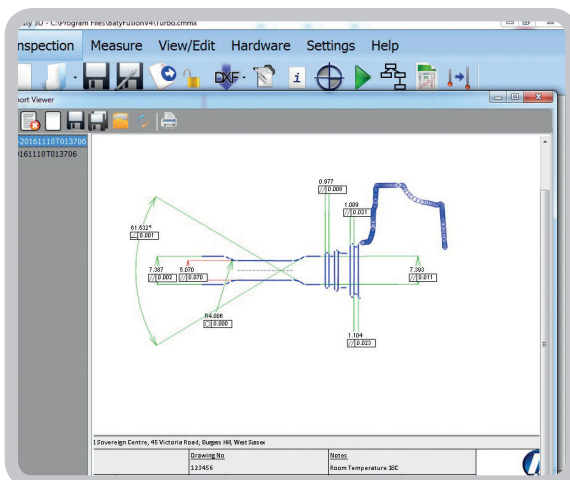
This simple plug and play retrofit improves speed, accuracy and ease of reporting for 2D measurement. Operator influence is no longer a concern and time and date stamped reports can be generated for customers and management teams as standard PDF's. Important information for your business is now collected with ease.



The newly developed screen mounted edge sensor allows data points to be taken quickly and used to construct standard geometric features and / or to overlay onto an imported CAD file for a "best fit" profile dimension, making the standard overlay unnecessary. Graphical reporting options include a dimensional drawing of the measured part, with color coded dimensions for pass / fail SPC functionality and a quick output to Excel.

**The costs for this enhancement to your existing projector start from \$4,995**

**To reinvigorate your existing hardware contact us for an on-site demo on YOUR projector today.**



# OPTICAL COMPARATOR RETROFIT OFFER

## The Software Package Upgrade

The software package has two differing options, depending upon your projector scale type, the full package is listed below:

### Retrofit Hardware kit supplied

- 22" Full HD touch screen monitor with stand or mounting arm
- Intel NUC mini PC with Fusion FT2-E touch screen metrology software
- Interface box for connection to existing Heidenhain / Accurite scales
- Optical edge sensor and screen mounting bar
- All necessary cables to convert from your existing scales

## The Software

Fusion metrology software has been the foundation for Fowler's non-contact systems. The combination of ease of use, advanced edge detection and graphical reporting has established this remarkable software as the standard by which other vision packages are measured.

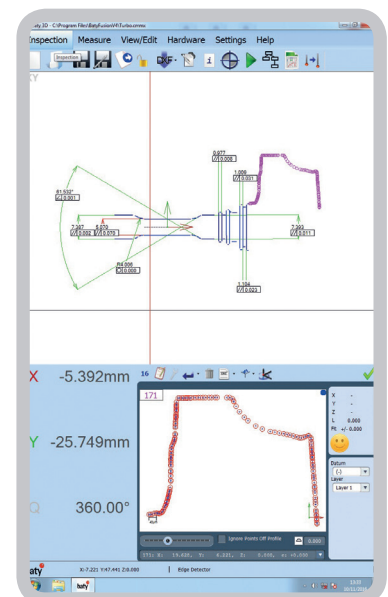
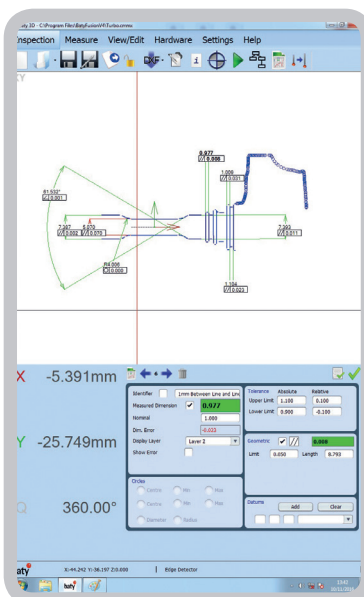
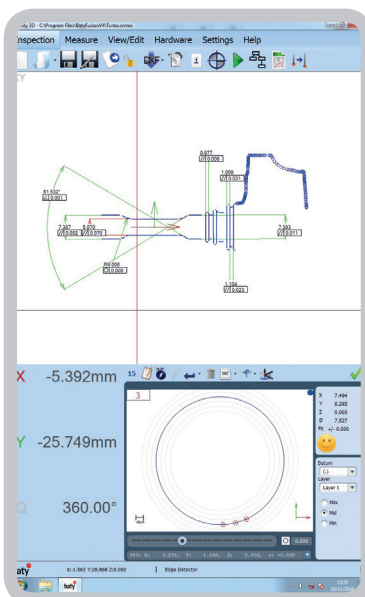
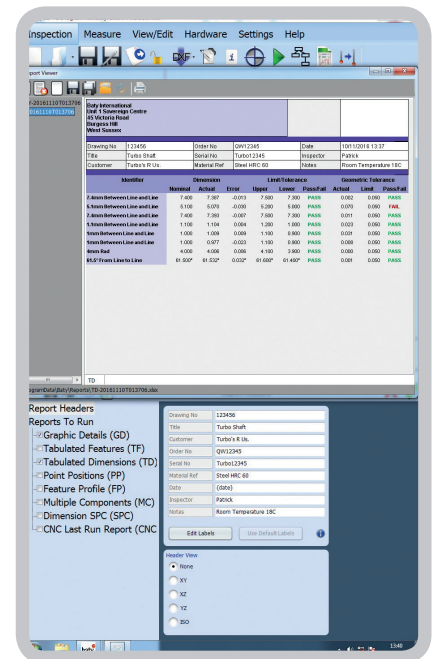
As part of this package all of the functionality below is available to rejuvenate your optical comparator.

### Fusion Software Functionality

- Best fitting of profile data to imported .DXF file
- 2D Geometric measurement functions
- Graphical reporting
- SPC capability and charting
- Output to Excel
- USB / LAN connectivity
- Windows OS
- Includes inspection playback function for batch inspection
- Solid state hardware from INTEL

### Optical Edge sensor included

- Newly designed edge sensor is highly repeatable
- Fast data point acquisition
- No operator influence
- Can be easily retrofitted with no need for reference probe
- Easy to set up
- Entire system is plug and play





**Compatible comparator types:**

Starrett  
Scherr-Tumico  
Dorsey Gage  
Deltronic  
Baty/Gagemaster

Nikon  
Mitutoyo  
Tesa  
Messtechnik

**Contact:**

**Fowler Technical Department  
(800) 788-2353 to arrange your demo**



**Fowler**<sup>®</sup>  
HIGH PRECISION

[www.fowlerprecision.com](http://www.fowlerprecision.com)

66 Rowe Street  
Newton, Massachusetts 02466  
Phone: (800) 788-2353 / (617) 332-7004  
Fax: (617) 332-4137  
E-mail: [sales@fowlerprecision.com](mailto:sales@fowlerprecision.com)