



Following is core acceptance criteria applicable for any core returned on or after November 01, 2017, regardless of purchase date.

STANDARDS COMMON TO ALL PRODUCTS

1. In an "as removed from the engine state."
2. Excessive rust is not acceptable.
3. No fire or physical damage.
4. Cannot have been disassembled or have missing parts.
5. Unless otherwise noted, core returned must be the same part number as purchased; like-for-like.
6. Cores damaged as part of installation, removal, or in shipping will not be accepted.

CP1 COMMON RAIL HIGH-PRESSURE PUMPS

Sprinter Pumps

DT270003R

The high-pressure fuel shutoff solenoid (EAV) electrical connectors cannot be damaged.

Acceptable Bosch part numbers: 0445010030 and 0986437016.

CP3 COMMON RAIL HIGH-PRESSURE PUMPS

1. MPROP electrical connector cannot be damaged.
2. No missing or damaged housing (freeze) plugs.

Dodge 5.9L Pumps

DT590003R

Acceptable Bosch part numbers: 0445020011, 0445020039, 0445020147 and 0986437304.

Dodge 6.7L Pumps

DT670002R

Acceptable Bosch part numbers: 0445020047, 0445020076, 0445020106, 0445020146 and 0986437334.

GM 6.6L Pumps

DT660005R

Acceptable Bosch part numbers: 0445020005, 0445020017 and 0986437303.

DT660006R

Acceptable Bosch part numbers: 0445020030 and 0986437308.

DT660007R

Acceptable Bosch part numbers: 0445020037, 0445020105 and 0986437332.

An Employee Owned Company

12693 Old Virginia Road
Reno, NV 89521
800.648.4720

DIPACODTECH.com

Sprinter Pumps

DT300001R

The fuel temperature sensor electrical connector cannot be damaged.

Acceptable Bosch part numbers: 0445010135 and 0986437327.

DT270004R

The fuel temperature sensor electrical connector cannot be damaged.

Acceptable Bosch part numbers: 0445010091, 0445010143 and 0986437323.

COMMON RAIL INJECTORS

Dodge 5.9L Injectors

DT590001R and DT590002R

Cores do not have to be like-for-like.

Acceptable Bosch part numbers: 0445120018, 0445120032, 0445120103, 0445120113, 0445120114, 0445120208, 0445120210, 0445120238, 0445120255, 0986435503 and 0986435505.

Dodge 6.7L Injectors

DT670001R

Cores do not have to be like-for-like.

No damage to the electrical posts accepted.

Acceptable Bosch part numbers: 0445120050, 0445120071, 0445120184, 0445120185, 0445120187, 0445120188, 0445120193, 0445120204, 0445120342, 0986435518, 0986435519, 0986435574 and 0986435621.

DT670006R

Cores do not have to be like-for-like.

No damage to the electrical posts accepted.

Acceptable Bosch part numbers: 0445120050, 0445120071, 0445120184, 0445120185, 0445120187, 0445120188, 0445120193, 0445120204, 0445120342, 0986435518, 0986435519, 0986435574 and 0986435621.

DT670007R

Cores do not have to be like-for-like.

No damage to the electrical posts accepted.

Acceptable Bosch part numbers: 0445120050, 0445120071, 0445120184, 0445120185, 0445120187, 0445120188, 0445120193, 0445120204, 0445120342, 0986435518, 0986435519, 0986435574 and 0986435621.

DT670008R

Cores do not have to be like-for-like.

No damage to the electrical posts accepted.

Acceptable Bosch part numbers: 0445120050, 0445120071, 0445120184, 0445120185, 0445120187, 0445120188, 0445120193, 0445120204, 0445120342, 0986435518, 0986435519, 0986435574 and 0986435621.

DT670009R

Cores do not have to be like-for-like.

No damage to the electrical posts accepted.

Acceptable Bosch part numbers: 0445120050, 0445120071, 0445120184, 0445120185, 0445120187, 0445120188, 0445120193, 0445120204, 0445120342, 0986435518, 0986435519, 0986435574 and 0986435621.

Ford 6.4L Injectors

DT640001R (DT64)

No damage to the fuel inlet connector threads, electrical connector or nozzle.

GM 6.6L Injectors

DT660001R (LB7)

Damage to the inlet connector threads is acceptable.
Acceptable Bosch part numbers: 0445120008 and 0986435502.

DT660002R (LLY)

Damage to the inlet connector threads is acceptable.
No damage to the electrical connector.
Acceptable Bosch part numbers: 0445120027 and 0986435504.

DT660003R (LBZ)

Damage to the inlet connector threads is acceptable.
No damage to the electrical connector.
Acceptable Bosch part numbers: 0445120042 and 0986435521.

DT660004R (LMM)

Damage to the inlet connector threads is acceptable.
No damage to the electrical connector.
Acceptable Bosch part numbers: 0445120082 and 0986435520.

Sprinter Injectors

DT270001R

If the top of the injector is covered with a melted black substance it is most likely the incorrect core. The substance must be carefully removed to determine the part number located on the stator.
No damage to the electrical connector.
Acceptable Bosch part numbers: 0445110181, 0445110182 and 0986435053.
Acceptable Dodge part numbers: 5135154AB.
Acceptable Mercedes part numbers: 6120700487.

DT270002R

No damage to the electrical connector.
Acceptable part numbers: 0445110162, 0445110163 and 0986435109.
Acceptable Dodge part numbers: 5137297AA.
Acceptable Mercedes part numbers: 6470700187.

FUEL INJECTION CONTROL MODULE (FICM) - FORD 6.0L (REGULAR AND COLD START)

Damage to the electrical connector is acceptable.

HIGH-PRESSURE OIL PUMPS - FORD 6.0L

Refer to standards common to all products.

HEUI INJECTORS - FORD 6.0L

Damage to the electrical connector, wires, and coils is acceptable.
The spool valve assembly cannot be separated from the injector body and at least one screw must be present (installed). Cores do not have to be like-for-like.

INJECTOR PRESSURE REGULATOR (IPR) - FORD 6.0L

No damage to the electrical connector.

INJECTOR DRIVE MODULES (IDM) - FORD 7.3L

IDMs with missing vent plugs are not acceptable. When the vent plug is missing there is almost always water that has entered the IDM, damaging all of the electronics.

Damage to the electrical connector is acceptable.

DT730012 IDM core will be silver in color. On the nametag it will have IDM-110 and one of the Ford part numbers listed on Product Bulletin FI-196.

DT730013 IDM core will be black in color. On the nametag it will have IDM-120 and one of the Ford part numbers listed on Product Bulletin FI-196.

HEUI INJECTORS - FORD 7.3L

The stator electrical connector can not be damaged.

INJECTION PRESSURE REGULATOR (IPR) - FORD 7.3L

No damage to the electrical connector.

Cores do not have to be like-for-like.

DT730014R has an edge filter (closed end).

DT730015R without an edge filter (open end).

HIGH-PRESSURE OIL PUMPS - FORD 7.3L

DT730005 Identification

The top passage in the mounting flange is plugged.

Threaded JIC hose connections.

Competitor part numbers: HP004X, HTP104, R98620004R, 1825247C91, 1825260C91, 1825271C93, 2503701C91, 991936C95 and F4TZ9A543BRM .

DT730006 Identification

The top passage in the mounting flange is open.

Threaded JIC hose connections.

Competitor part numbers: HP005X, HTP105, R98620005R, 185248C91, 1825259C91, 1826794C93, 2503703C91, 991935C94 and F6TZ9A543ARM.

DT730007 + DT730008 Identification

DT730007 and DT730008 are interchangeable.

The top passage in the mounting flange is open.

Quick connect hose connections.

The round rear cover may be embossed with the number 449 or 857.

Competitor part numbers: HP007X, HTP107, R98620007R, 1830857C91, 2503704C91, 991964C93, 5C3Z9VA543BRM, F81Z9A543BRM, HP008X, HTP108, R98620008R, 1831449C91, 501009R91 and F81Z9A543CRM.

INJECTORS - GM 6.5L

Threads cannot be damaged.

Cores with damaged or broken barbed return connections are accepted.

Cores do not have to be like-for-like.

DS PUMPS - GM 6.5L

DT650003R + DT650004R

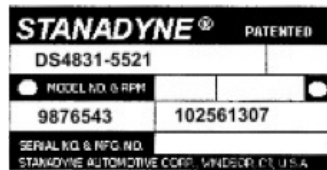
Damage to the PMD wiring harness plastic electrical plugs is acceptable. No damage to the male, female or eyelet electrical connections or to the wiring harness is acceptable.

The ESO wiring harness must be undamaged, damage to its electrical connector is acceptable.

Damage to the stepper motor and its electrical connector is not acceptable.

The encoder sensor connector-retaining clip can be broken. However, the rest of the encoder housing may not be damaged.

Pumps with a missing or black Stanadyne label nameplate (see below) are not acceptable. Black DTech labels are acceptable.



DT650003R

Acceptable GM part numbers: 10225930, 12558156, 12561307, 12561405, 17800077, 17800114, 19208315, 19208317 and 19209059.

Acceptable Stanadyne part numbers: DS4831-5067, DS4831-5288, DS4831-5459, DS4831-5521 and DS4831-5942.

DT650004R

Acceptable GM part numbers: 10225929, 17800076, 17800113 and 19208316.

Acceptable Stanadyne part numbers: DS4831-5068 and DS4831-5941.

TURBOCHARGERS

Dodge 6.7L Turbocharger

DT670003R (DT8048234R)

In an "as removed from the engine state."

Core returned must be the same part number as purchased, like-for-like.

Wastegate electronic actuator required with no damage to the housing, cable and connector.

Acceptable part numbers: 2384228, 2834603, 2835911, 2837647, 2839682, 2882075, 3768088, 3770973, 3770974, 3790481, 3790483, 3799840, 4043137, 4046837, 4955361 and R8048234AG.