

Stow in Versa TVC 3/2 Quick-Column

1 Remove hook from bottom of Quick-Column.



2 Screw MTX shaft into hook.



3 Replace hook; stow & go!

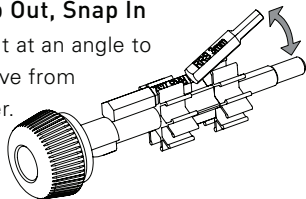


GUARANTEE

ALL REALLY RIGHT STUFF BRAND PRODUCTS ARE GUARANTEED TO THE ORIGINAL PURCHASER TO BE FREE OF DEFECTS IN MATERIALS OR WORKMANSHIP FOR FIVE (5) YEARS FROM THE DATE OF PURCHASE. PRODUCTS WILL BE REPAIRED OR REPLACED AT OUR OPTION.

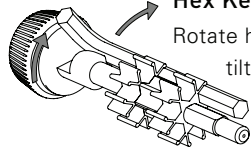
Snap Out, Snap In

Tilt bit at an angle to remove from holder.



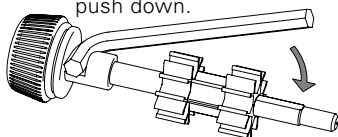
Hex Key Removal

Rotate hex key out then tilt to remove.



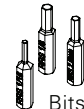
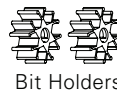
Hex Key Storage

Tuck stubby end in place then push down.



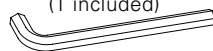
1146 Farmhouse Lane, San Luis Obispo, CA 93401 USA
1-805-528-6321 | 1-888-777-5557
www.ReallyRightStuff.com

MTX MULTI-TOOL



Bits
(22 included)

Hex Key
(1 included)



SPECIFICATIONS:

Weight of Driver Handle with primary Bit Holder & Bits installed	3.4oz / 95g
Weight of secondary Bit Holders & Bits	1.3oz / 38g
Length of Driver Handle	4.9" / 124mm
Total number of Bits included	22
Number of Hex Keys included	one stubby 3/16"
Replacement Bits/Hex Key	\$1 / \$8

Bits are sourced from Taiwan. All other components are sourced from the US. Bits and hex key made from steel with corrosion resistant coating. Hex socket driver accepts standard 3/16" bits.

®, ™, © 1990-2017 Really Right Stuff, Inc. All rights reserved.

KEY FEATURES

Hex socket driver accepts standard 3/16" bits; magnetic driver keeps RRS steel bits securely in place.

Stainless steel shaft threaded industry-standard 3/8"-16.

Driver handle is nicely textured for grip and comfortably fits the hand.

Driver handle comes with bit holder loaded with 10 of the most commonly used RRS tips and stubby 3/16" hex key.

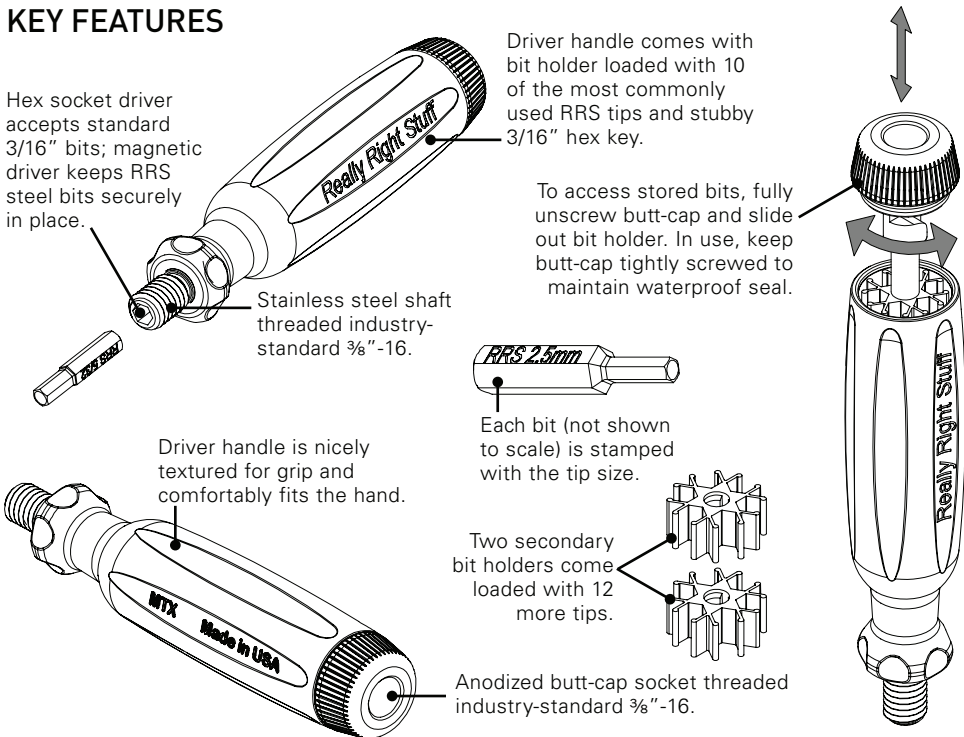
To access stored bits, fully unscrew butt-cap and slide out bit holder. In use, keep butt-cap tightly screwed to maintain waterproof seal.



Each bit (not shown to scale) is stamped with the tip size.

Two secondary bit holders come loaded with 12 more tips.

Anodized butt-cap socket threaded industry-standard 3/8"-16.



LIST OF INCLUDED BITS / RRS HARDWARE



HEX TIPS

0.05 inch	screws included with LCF-10P
1/16 inch	legacy BH-55 panning base screws
5/64 inch	leveling bases
3/32 inch	legacy safety stop screws
7/64 inch	general purpose
1/8 inch	Versa SureGrip™ apex screws, tripod platform set screws
9/64 inch	general purpose
5/32 inch	plates with 1/4"-20 screws, screws for clamps, TQC-14 leg angle tension screws
3/16 inch	Versa 3/2 leg angle tension screws
7/32 inch	plates with 3/8"-16 screws, Versa 4 leg angle tension screws
2mm	general purpose
2.5mm	safety stop screws
3mm	most Lens Collar Foot (LCF) screws, M5 flathead screws



JIS/CROSS TIPS

#00	common camera & lens screws
#0	common camera & lens screws
#1	common camera & lens screws



FLAT TIPS

#1	general purpose
#2	general purpose



TORX/STAR TIPS

T10	general purpose
T15	general purpose
T20	general purpose
T25	general purpose