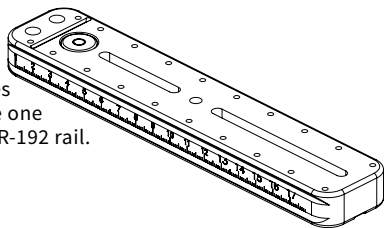







1146 Farmhouse Lane, San Luis Obispo, CA 93401 USA  
 1-805-528-6321 | 1-888-777-5557  
 www.ReallyRightStuff.com

## CLAMP & RAIL PACKAGES

All packages include one MPR-192 rail.



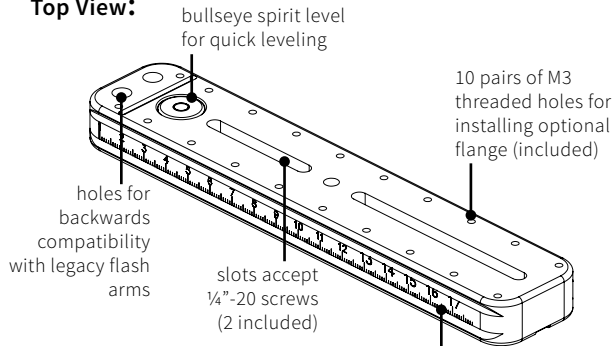
### PACKAGES:

-  192 Precision Plus Package....B2-FAB + B2-mAS clamps
  -  192 FAS Package.....FAS clamp
  -  192 Duo Package.....B2-Duo clamp
- MPR-192 Rail Length.....7.6 inches / 192mm

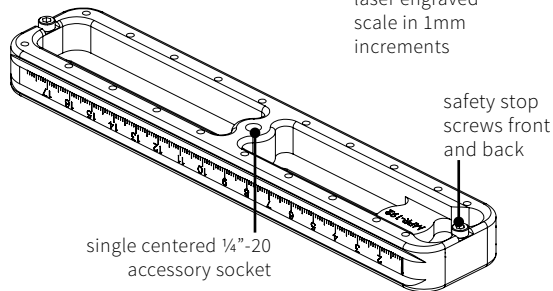
Clamp & Rail Packages are commonly used as nodal slides for panoramas, as focusing rails for macro, and as lateral sliders for tilt-shift & macro panoramas. Choose the clamp that accepts the fore/aft or left/right dovetails of your plates.

## KEY FEATURES OF MPR-192 RAIL:

### Top View:

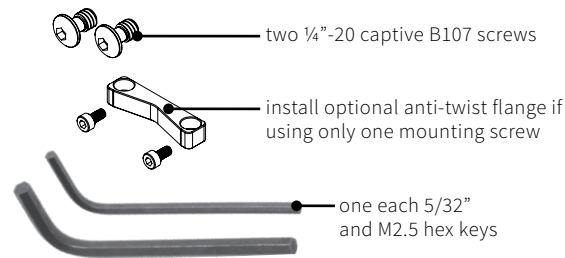


### Bottom View:



## Optional Hardware:

Your MPR-192 Rail can also be used as a multi-purpose rail for large lenses or cameras. In that case, you may wish to use the included hardware. However, when used as part of a Clamp & Rail Package, the hardware is unnecessary.



## GUARANTEE

ALL REALLY RIGHT STUFF BRAND PRODUCTS ARE GUARANTEED TO THE ORIGINAL PURCHASER TO BE FREE OF DEFECTS IN MATERIALS OR WORKMANSHIP FOR FIVE (5) YEARS FROM THE DATE OF PURCHASE. PRODUCTS WILL BE REPAIRED OR REPLACED AT OUR OPTION.

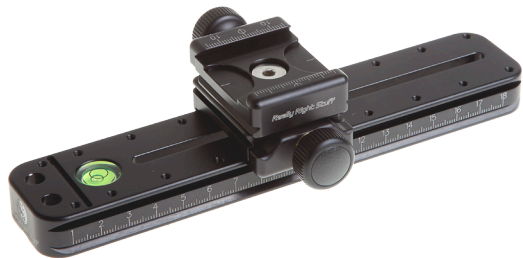
©, ™, © 2017 Really Right Stuff, LLC. All rights reserved.



## 192 PRECISION PLUS PACKAGE

MPR-192 + B2-FAB + B2-mAS

Sliding back-to-back mini-clamps accept quick-release plates with fore/aft dovetails **and** left/right dovetails.



### In Use

Most body plate dovetails run left/right, but lens feet dovetails run fore/aft. To change clamp orientation, loosen screw 3 rotations, then lift and re-orient clamp; tighten screw.



**For Lens Plates: clamp knobs are parallel.**

OR



**For Body Plates: clamp knobs are perpendicular.**



## 192 FAS PACKAGE

MPR-192 + FAS Clamp

Sliding lever-release clamp accepts Really Right Stuff quick-release plates with left/right dovetails.



### In Use

The FAS clamp delivers the best precision positioning of all Clamp & Rail Packages due to its unique index marker.

This makes the FAS Package an excellent choice as a nodal slide for panoramas. Use locking knob opposite index marker to lock clamp in place.

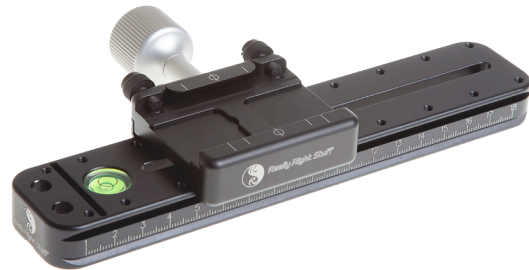
Not compatible with Novoflex or Arca-Swiss P0 plates.



## 192 DUO PACKAGE

MPR-192 + B2-DUO Clamp

Sliding clamp accepts quick-release plates with fore/aft dovetails.



### In Use

The B2-DUO is our lowest profile sliding clamp. Clamp locks to rail & plate simultaneously because clamp knob drives directly against a single clamp jaw. Nylon thumbscrews function only to keep lens plate in place when clamp jaw is loosened to make changes in position along the rail.

