

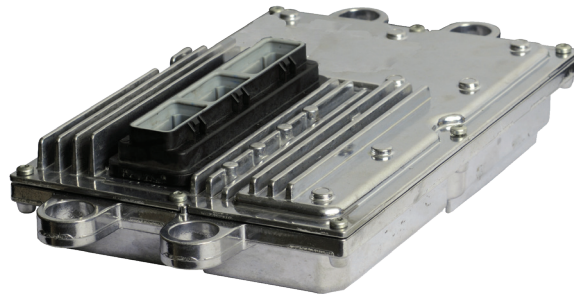
## **Understanding The Relationship Between The Ford 6.0L Cold Start FICM + Your Scan Tool**



If you use your scan tool to check the Fuel Injection Control Module (FICM) voltage on our Cold Start FICM, part number DT600009R, 48V will be displayed instead of the 58V the FICM is actually providing. If the FICM were to communicate the 58V to the PCM an error code would result. Our Cold Start FICM is coded to prevent this error from occurring.

To confirm the FICM 58V output the voltage must be read directly at the FICM, this is not recommended because shorting out a test lead on the FICM case may result in damage to the FICM.

The DTech 6.0L Cold Start FICM provides 58V vs. the normal 48V to the injectors to provide better spool valve operation improving the engine's ability to start in cold weather. Each DTech Cold Start FICM is tested during assembly to ensure unit does, in fact, produce 58V.



**DT600009R**

*An Employee Owned Company*

12693 Old Virginia Road  
Reno, NV 89521  
800.648.4720

**DIPACODTECH.com**