



# BLASTONE® ABRASIVE RECYCLING TOWER

On blasting projects, having clean abrasives is paramount to the quality of surface preparation.

This high performance abrasive recycling system is an integrated vacuum recovery and automatic abrasive cleaning tower which can be used to clean both ferrous and non-ferrous abrasive.

 **Can be used in portable and fixed installations**

 **Capacity up to 50 tons per hour of steel grit**



# KEY FEATURES



Heavy-duty frame w/both vertical and horizontal lifting eyes and fork pockets for easy transport and set-up



Stainless steel panel housing controls for screens, on-board dust collector, magnetic drum, double-dump, and abrasive transfer unit



(2) High-capacity 6" vacuum inlets for entry of recovered abrasive with 8" connections ports to vacuums(hoses not included)



Reclaimed abrasive cleaning capacity



Adjustable abrasive air-wash w/on-board dust collector for optimal cleaning



Adjustable magnetic drum separator for fine tuning of abrasive size



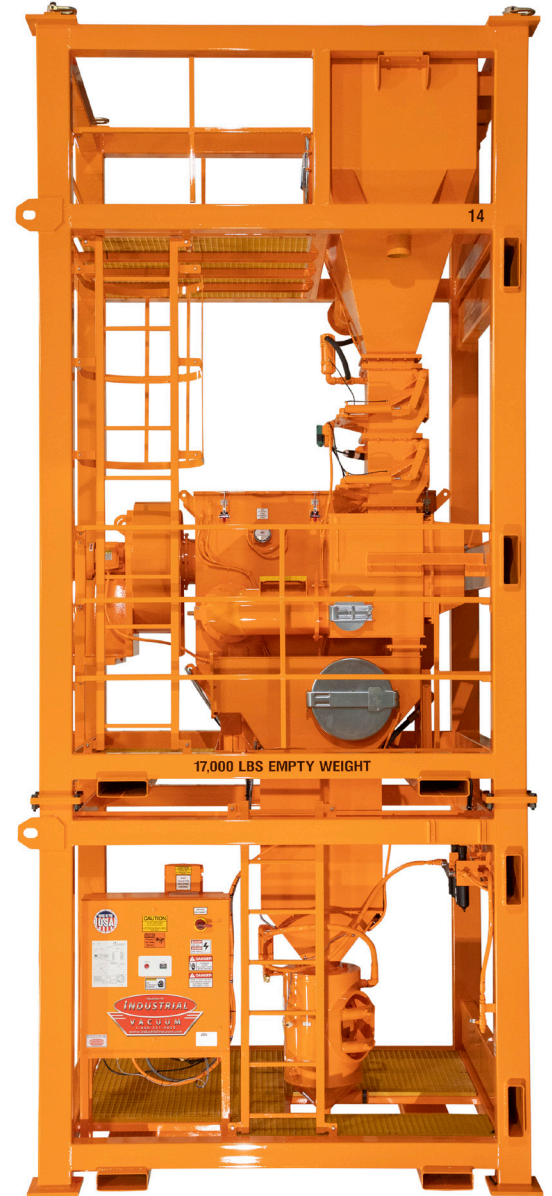
Full-length hoses from the vibratory screens, air-wash, dust collector and mag-drum carry all collected material to ground level for easy disposal



Abrasive transfer unit designed to quickly, automatically, and efficiently transfer the clean abrasive to the blast unit



Safety ladder and platforms for easy reach of all components



## OPTIONS AVAILABLE

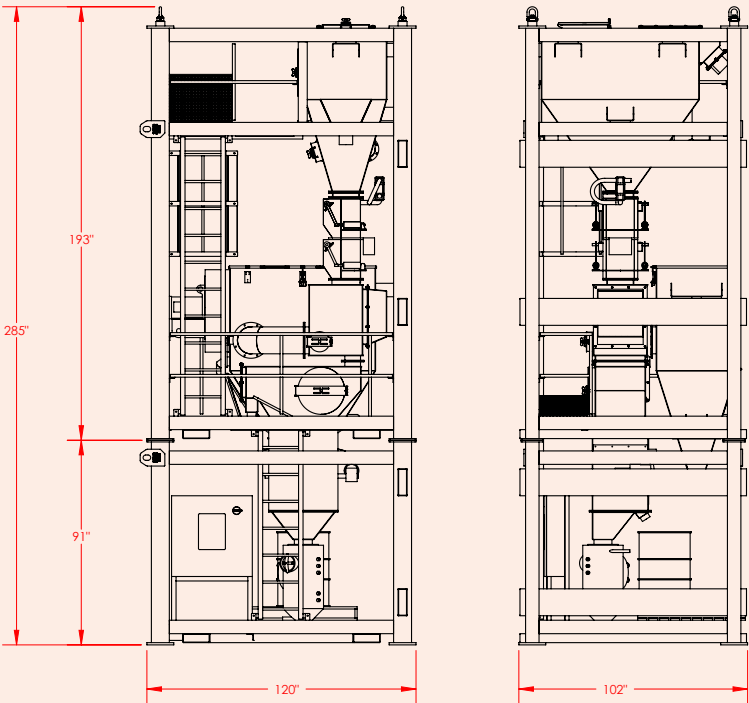
600 cubic foot, 8 outlet blast pot (holds 80 tons of steel grit)

Pneumatic transfer lid

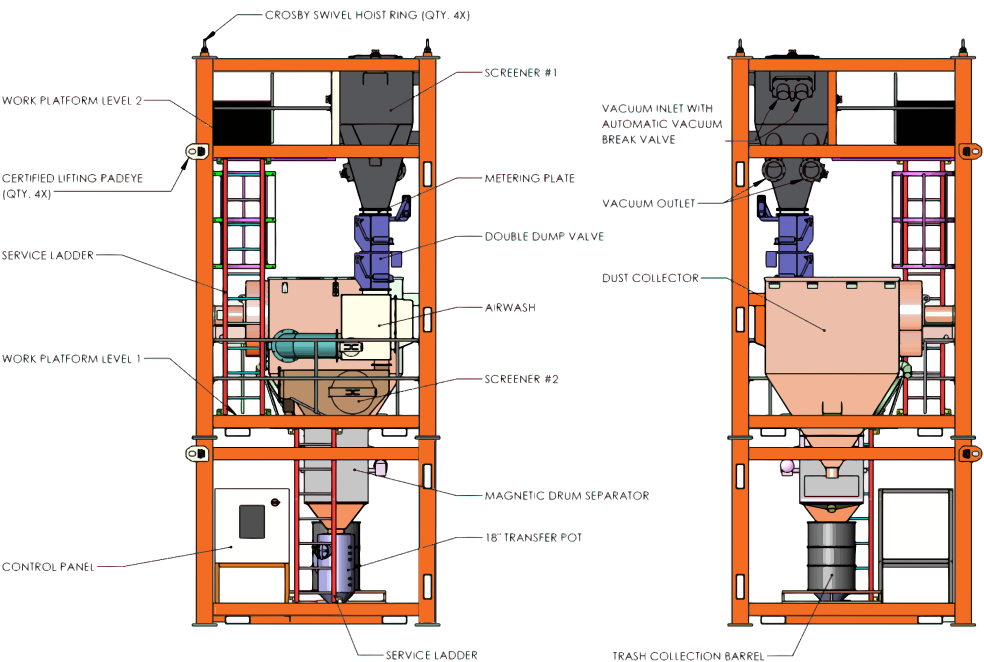
Dual outlet transfer pot



DIMENSIONS



SYSTEM COMPONENTS



## BLASTONE VACUUM RECYCLING TOWER



BLASTONE INTERNATIONAL  
4510 Bridgeway Avenue  
Columbus Ohio 43219 USA

Toll Free 800 999 1881  
Tel (614) 476 3000  
Fax (614) 476 6939  
Email [sales@blastone.com](mailto:sales@blastone.com)  
[www.blastone.com](http://www.blastone.com)

**NORTH AMERICA**  
Columbus | Los Angeles |  
Minneapolis

**UNITED KINGDOM**  
London

**AUSTRALIA**  
Adelaide | Brisbane | Darwin |  
Mackay | Melbourne | Perth | Sydney

**NEW ZEALAND**  
Auckland | Christchurch