

Cold Start Fuel Injection Control Module For Ford 6.0L Power Stroke



In addition to a standard fuel injection control module (FICM), part number DT600008R, DTech now has available a cold start FICM for Ford 6.0L Power Stroke applications, part number DT600009R. The FICM voltage has been increased from 48 volts to 58 volts to help minimize hard starting problems in cold weather.

With the DTech remanufactured FICM you only need one part number to cover all of the Ford 6.0L applications instead of the three part numbers most other FICM remanufacturers have. The FICM comes already programmed. Having the single part number will help lower your inventory costs and insure you always have the right model on hand.

The DTech FICM remanufacturing process includes replacement of all parts known to cause FICM voltage issues. The FICM is tested using true electronic spool valve loads as well as tested in varying temperature environments. The FICM is remanufactured in the US and comes with the standard DTech warranty.

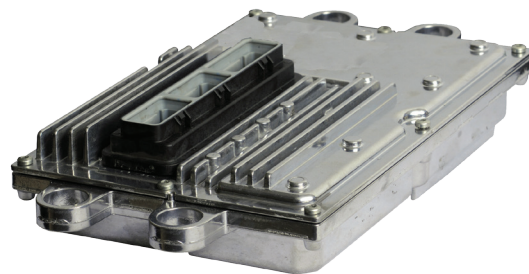
Below is part number and application information.

APPLICATION INFORMATION

FUEL INJECTION CONTROL MODULE			
Model Year	Application	OEM Number	DTech Number
2003 - 2007	F Series 250-550	4C3Z-12B599-ABRM	DT600009R
2003 - 2005	Excursion		
2004 - 2010	E Series		

Note: While the FICM is programmed to work with all Ford 6.0L applications, ALL FICM, regardless of supplier, still need to have the Vehicle Identification Number (VIN) entered into the FICM as the ECU checks the FICM for matching VIN. If the VIN is not entered the engine will still operate correctly but an error code may appear.

Note: Ford F650 / 750 applications use the VT365 engine with the Navistar engine management system. When the FICM is installed on the F650 / 750 the engine will run, but the check engine light will be turned on and a DTC is set. The DTC is 613. PCM / IDM software is incompatible. The FICM will need to be reprogrammed with the appropriate Navistar device.



DT600009R

An Employee Owned Company

12693 Old Virginia Road
Reno, NV 89521
800.648.4720

DIPACODTECH.com

Additional Resources

Product Information Bulletins:

FI-262 - Understanding The Relationship Between The Ford 6.0L Cold Start FICM and Your Scan Tool

FI-262 - Fuel Injection Control Module For Ford 6.0L Power Stroke