



SCHMIDT®

BAABS DEADMAN

NEW GENERATION OF
BLASTING SAFETY



USE CODE
BAABS100
FOR **\$100 OFF**
YOUR FIRST
ONLINE BAABS
ORDER



BAABS stands for Blasting Accessories & Assist Bracket System

BAABS is an entirely new deadman control system, designed to:

- ▶ Increase operator safety by encouraging operator compliance
- ▶ Decrease operator fatigue by transferring force to stronger areas of the body
- ▶ Increase productivity as a result of the easier blasting process

Industry Safety Officers are dismayed by how rampant the scenario of blasters by-passing a deadman handle on jobsites truly is.

Although the device ensures a blaster's safety, the blaster's themselves are choosing to disengage the device for hand comfort and/or to avoid the time delays of the pot needing to re-pressurize itself upon release of the deadman.

BAABS not only ensures the safety of the blaster, but also assists hand comfort by utilizing a trigger-style activation that is ergonomically satisfying to the blaster.

Coupled with its thrust-reducing brace, it's the first deadman handle that not only protects blasters, but enhances their comfort and productivity.

WORK SMARTER NOT HARDER

THE SAFEST DEADMAN

The G3 Trigger deadman with safety flap mechanically prevents inadvertent activation. The redundant spring-loaded safety latch assures the base stays wrapped around the blast hose.

The G3 Trigger guard provides additional protection (better than ALL lever-style deadman controls currently in the market).

It's a deadman that blasters will use.

REDUCES FATIGUE

BAABS directs the strength demand directly onto the torso and it requires a smaller number of muscles to manage the nozzle thrust which significantly reduces operator fatigue, allowing blasters to accomplish more each work shift. Allows blasters to hold the nozzle with their body weight.

COMFORT

Clenched grips, hand cramps, and arm fatigue are reduced due to the friendlier grip design which allows for more comfortable grip and control of the blast hose - it's easier to hold a trigger than a blast hose.



PRODUCTIVITY

The BAABS unit will increase daily nozzle ON time due to minimizing the need to stop to reposition. Less on/off time reduces blast pot component wear.

Increased comfort from the nozzle thrust management can easily accommodate higher nozzle pressure and result in higher productivity and lower abrasive consumption.

VERSATILE

Handles and grips can be moved or adjusted to accommodate varying arm lengths.

Thrust pad and side grip can be quickly configured for left or right-handed operation.

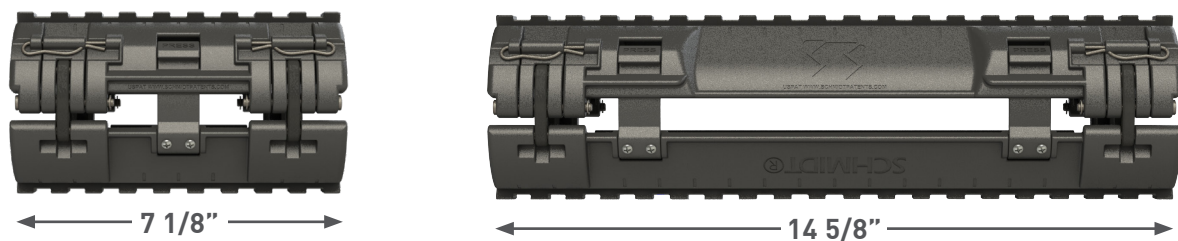
Can be quickly installed onto existing blast hose. Becomes a platform rail for attaching accessories.

SHORT VS. LONG BAABS?

The short BAABS was originally designed to be used by operators in smaller and restrictive work areas such as a small blast room. The long BAABS was designed for open areas with flat surfaces such as railcars, storage tanks, and ship hulls.

Ultimately the operator's personal preference plays a part in the selection. Operators of smaller stature tend to enjoy the benefits of the short BAABS while operators of larger stature often choose the long BAABS.

This is not the case for every operator as each operator has their own blasting preferences.



PICATINNY-STYLE ATTACHMENT RAIL

The BAABS platform provides a durable notched rail, allowing for customization and inclusion of key blast accessories.

Whether you want to reposition the trigger or thrust management brace, attach grip handles, or secure lighting, the BAABS rail easily accommodates these modifications.



CHOOSE THE BAABS

TO SUIT YOUR NEEDS

How to read BAABS part numbers:

D M B B	L	2	E
	Rail Length	Trigger Style	Control System
	This letter indicates the length of the BAABS rail	This number indicates the trigger stage of the BAABS	This letter indicates the power option of the BAABS
	L - Long Rail S - Short Rail	2 - Two Stage 3 - Three Stage	P - Pneumatic E - Electric

RAIL TYPE	LONG RAIL				SHORT RAIL			
Trigger Style	2-Stage Trigger		3-Stage Trigger		2-Stage Trigger		3-Stage Trigger	
Control System	Electric	Pneumatic	Electric	Pneumatic	Electric	Pneumatic	Electric	Pneumatic
Part Number	DMBBL2E	DMBBL2P	DMBBL3E	DMBBL3P	DMBBS2E	DMBBS2P	DMBBS3E	DMBBS3P

SHORT RAIL BAABS

ELECTRIC SHORT RAIL BAABS DEADMAN



PNEUMATIC SHORT RAIL BAABS DEADMAN



LONG RAIL BAABS

ELECTRIC LONG RAIL BAABS DEADMAN



PNEUMATIC LONG RAIL BAABS DEADMAN



CONFIGURATIONS

CUSTOMIZE YOUR BAABS WITH THE G3 TRIGGER-STYLE DEADMAN OF YOUR CHOICE

The new Schmidt® brand pneumatic and electric G3 Trigger-style deadman controls combine time-tested concepts and components with unprecedented comfort to provide blasters with the most dependable deadman in the industry.

With real-world abrasive air blast applications in mind, these deadman controls are designed

to have all the features and benefits blasters look for.

The G3 Trigger-style deadman is easy and comfortable to use, provides fast response, is easy to configure, is simple to maintain and optimize operator safety.

2 POSITION TRIGGER

The 2 Position Deadman enables the blaster to switch between off and abrasive air blast.

It controls two functions:

- ▶ Position 1 is off
- ▶ Position 2 turns on the blast air and abrasive



2 POSITION ELECTRIC



2 POSITION PNEUMATIC

PART NUMBER	DESCRIPTION
DM2270102	G3 Electric Trigger Deadman - 2 position
DM2270101	G3 Pneumatic Trigger Deadman - 2 position

3 POSITION TRIGGER

The 3 Position Deadman feature enables the blaster to seamlessly switch between abrasive blasting and blowing off the surface.

It controls three functions:

- ▶ Position 1 is off
- ▶ Position 2 turns on the blast air
- ▶ Position 3 turns on the blast air and abrasive



3 POSITION ELECTRIC



3 POSITION PNEUMATIC

PART NUMBER	DESCRIPTION
DM2270202	G3 Electric Trigger Deadman - 3 position
DM2270201	G3 Pneumatic Trigger Deadman - 3 position

ACCESSORIES

BLAST HOSE GRIPPER ASSEMBLY

BAABS deadman rail comes with four Blast Hose Grippers.

Each side of the rail base houses two grippers that effectively grip the exterior surface of the blast hose to prevent sliding but allow rotation (swivel).

Each Blast Hose Gripper is offered in different sizes to allow the base to be configured for various blast hose sizes (3/4"-1 1/2"). Grippers simply snap into the inside of the BAABS rail.



PART NUMBER	HOSE ADAPTER	QUANTITY	LIGHT WALL	HEAVY WALL	NOZZLE HOLDER
DMBB450000508PK	M1	2 per pack (2 pks rq'd)	1"	3/4"	HE1
DMBB450000608PK	M2	2 per pack (2 pks rq'd)	1 1/4"	1"	HE2
DMBB450000708PK	M3	2 per pack (2 pks rq'd)	1 1/2"	1 1/4"	HE3
DMBB450000808PK	M4	2 per pack (2 pks rq'd)	N/A	1 1/2"	HE4

The BAABS comes standard with the M2, M3 and M4. The M1 is available separately.

THRUST MANAGEMENT BRACE ASSEMBLY

The BAABS is designed to direct most of the blast nozzle thrust onto the Thrust Management Brace Assembly which will typically be placed onto the chest.

This places the strength demand directly onto the torso, resulting in lower muscle exertion by not requiring the arms to directly or indirectly manage all of the thrust. This greatly reduces operator strain.

Clenched grips (hand cramps) and arm fatigue are greatly reduced due to the easier grip design which allows for a more comfortable grip and control of the blast hose.

PART NUMBER	DESCRIPTION
DMBB450000006	BAABS Thrust Management Brace Sub-Assembly

The BAABS comes standard with this item.



SIDE GRIP

The Side Grip can be quickly configured for left- or right-handed operations and multiple positions to accommodate different blast angles.

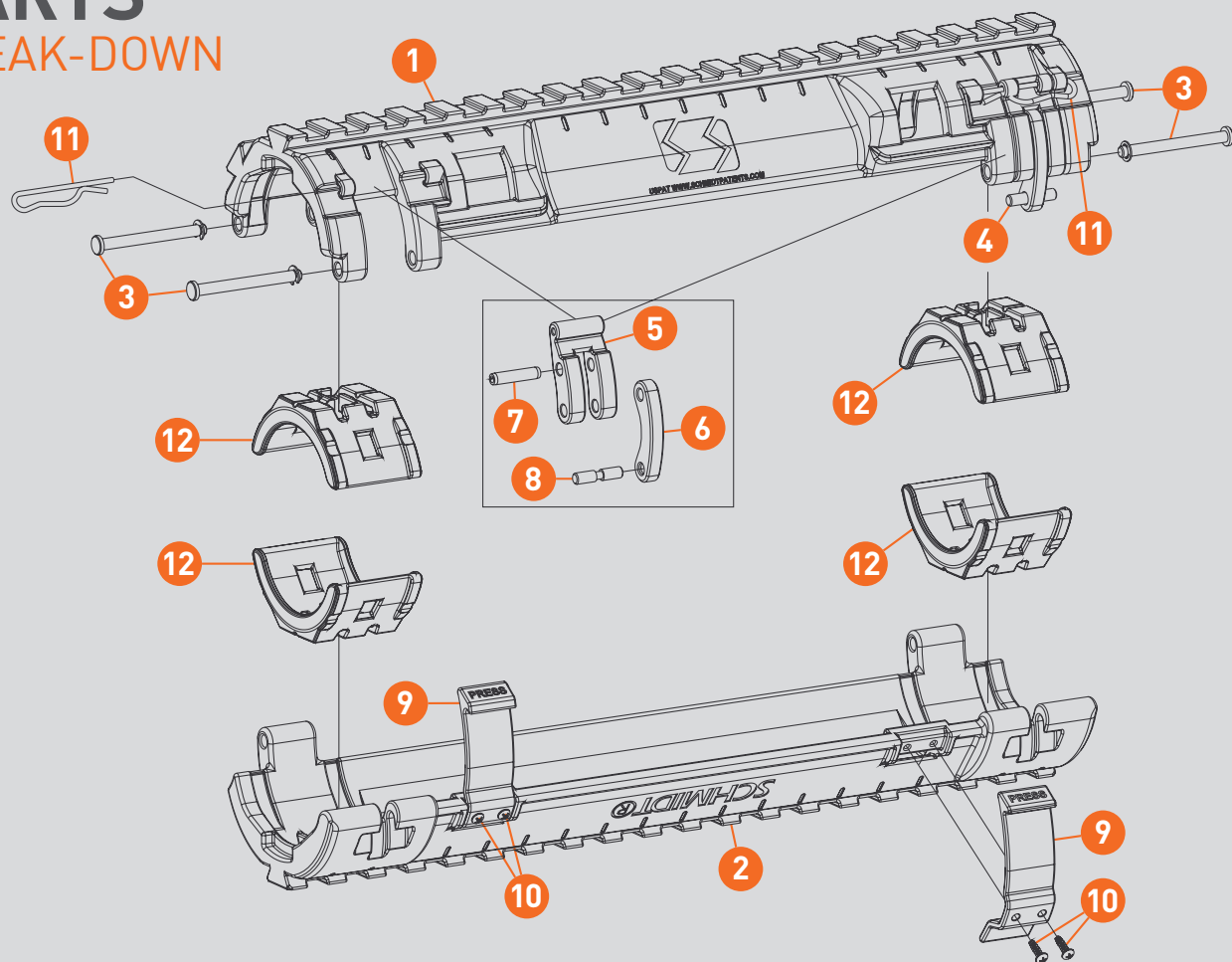


PART NUMBER	DESCRIPTION
DMBB450000016	BAABS Rail Mount Side Grip Sub-Assembly

The BAABS comes standard with this item.

PARTS

BREAK-DOWN

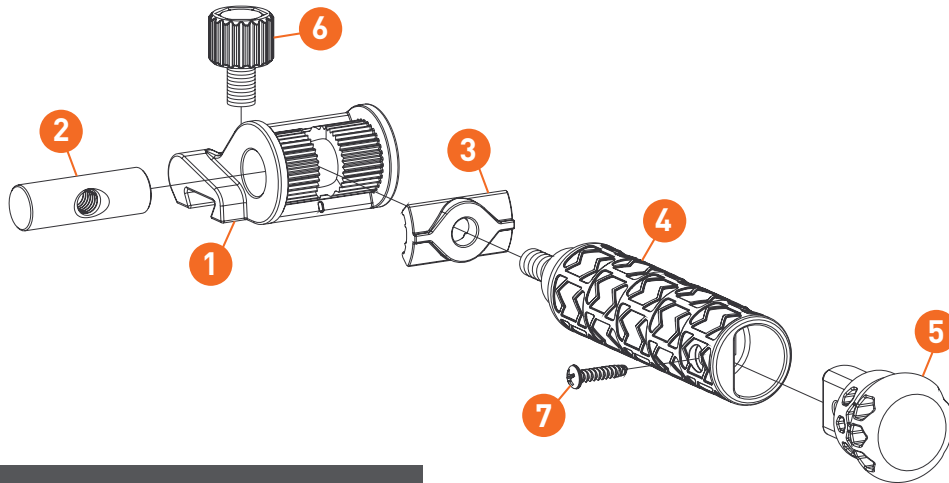


BAABS RAIL BASE

NO.	DESCRIPTION	PART NUMBER
0a	BAABS Long Rail Base Assembly (shown)	DMBB4520000
0b	BAABS Short Rail Base Assembly	DMBB4510000
1a	Upper Long Rail (shown)	DMBB452000001
1b	Upper Short Rail	DMBB451000001
2a	Lower Long Rail (shown)	DMBB452000002
2b	Lower Short Rail	DMBB451000002
3	Rail Hinge Pin (Pack of 20)	DMBB450000011PK
5	Rail Latch Lever (Pack of 2)	DMBB450000003MPK
6	Rail Latch Spring (Pack of 2)	DMBB450000009PK
7	Latch Slotted Spring Pin (Pack of 20)	DMBB450000012PK
8	Grooved Latch Pin (Pack of 10)	DMBB450000013PK
9	Rail Snap-Lock Safety	DMBB450000004
10	Thread Forming Screw, #4-20 x 7/16, (Pack of 50)	DMBB450000014PK
11	BAABS Rail Base Safety Pin, (Pack of 25)	HCLP1
12	BAABS Gripper Module	See page 7

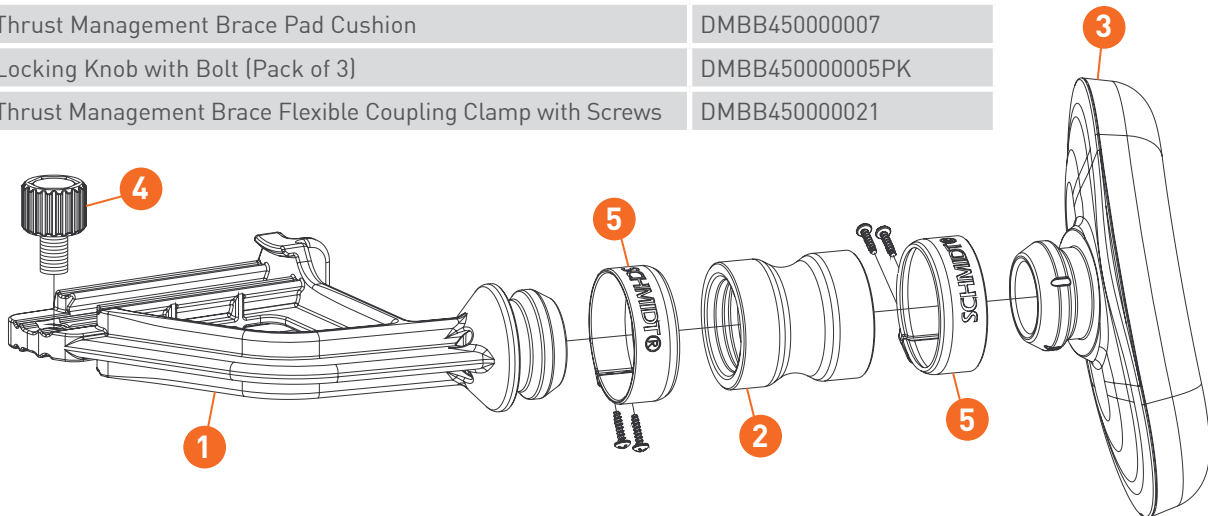
SIDE GRIP

NO.	DESCRIPTION	PART NUMBER
0	Side Grip Assembly	DMBB450000016
1	Side Grip Rail Adapter	DMBB450000016M
2	Side Grip Handle Pivot	DMBB450000019
3	Side Grip Handle Locking Plate	DMBB450000017
4	Side Grip Handle w/Bolt	DMBB450000018
5	Side Grip Handle Bumper	DMBB450000020
6	Locking Knob with Bolt (Pack of 3)	DMBB450000005PK
7	Thread Forming Screw #8-16 x 3/4" long (Pack of 50)	DMBB227000015PK



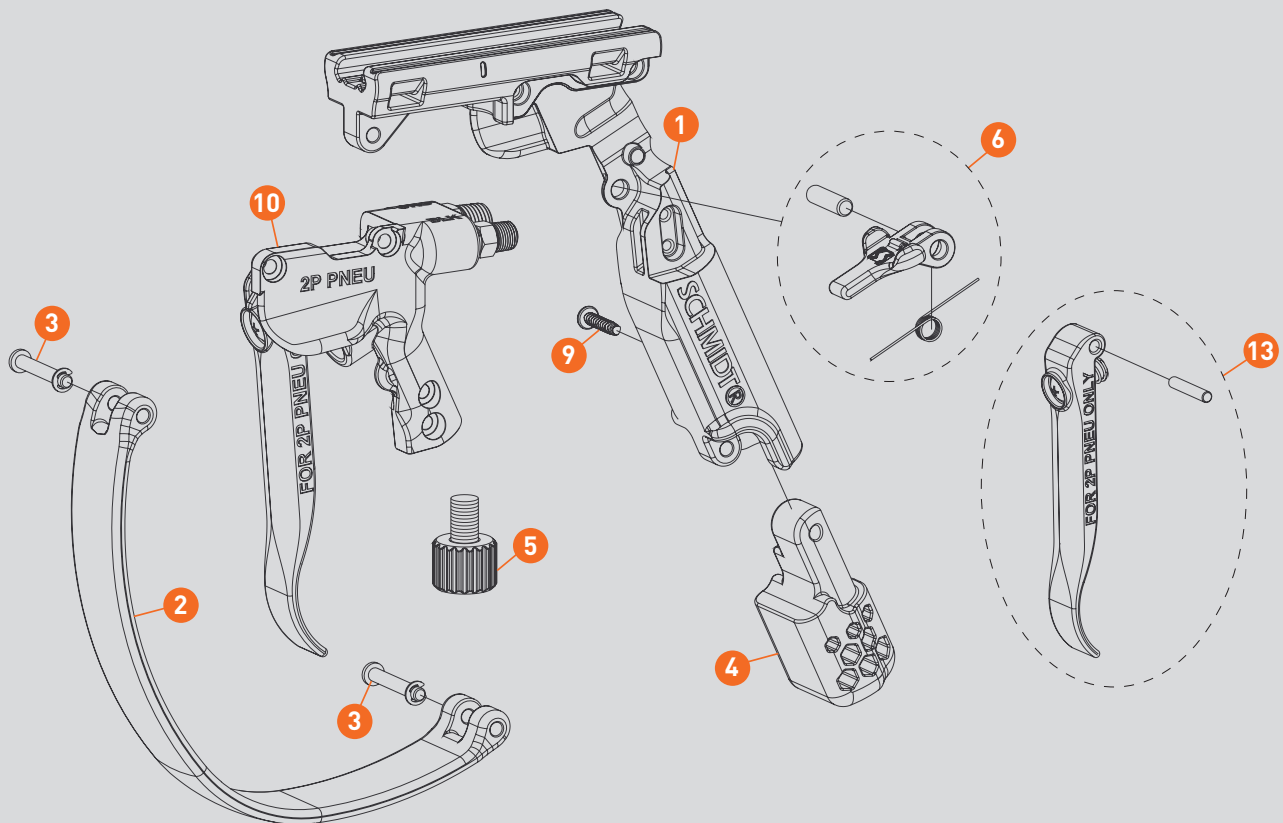
THRUST MANAGEMENT BRACE

NO.	DESCRIPTION	PART NUMBER
0	Thrust Management Brace Assembly	DMBB450000006
1	Thrust Management Brace Rail Adapter	DMBB450000006M
2	Thrust Management Brace Flexible Coupling	DMBB450000010
3	Thrust Management Brace Pad Cushion	DMBB450000007
4	Locking Knob with Bolt (Pack of 3)	DMBB450000005PK
5	Thrust Management Brace Flexible Coupling Clamp with Screws	DMBB450000021



G3 TRIGGER DEADMAN

NO.	DESCRIPTION	PART NUMBER
0	G3 Deadman Base Grip Handle, complete assembly without Control Module	DMBB2270000
1	G3 Deadman Upper Handle Grip	DMBB227000001
2	G3 Deadman Trigger Guard (Pins sold seperately)	DMBB227000002
3	G3 Deadman Guard Pins, with Retaining Rings (Pack of 4)	DMBB227000008PK
4	G3 Deadman Handle Grip Bottom Bumper (Pack of 2)	DMBB227000007PK
5	BAABS Locking Knob with Bolt (Pack of 3)	DMBB450000005PK
6	G3 Deadman Safety Flap Sub-Assembly (Pack of 2)	DMBB227000003APK
9	G3 Deadman Thread Forming Screw #8-16 x 34" (Pack of 4)	DMBB45000015PK
10a	G3 Control Module for 2 Position Pneumatic Deadman, includes Trigger	DM2270101CM
10b	G3 Control Module for 2 Position Electric Deadman, includes Trigger	DM2270102CM
10c	G3 Control Module for 3 Position Pneumatic Deadman, includes Trigger	DM2270201CM
10d	G3 Control Module for 3 Position Electric Deadman, includes Trigger	DM2270202CM
13a	G3 Trigger Sub-Assembly for 2 Position Pneumatic Deadman	DM2270101T
13b	G3 Trigger Sub-Assembly for 2 Position Electric Deadman	DM2270102T
13c	G3 Trigger Sub-Assembly for 3 Position Pneumatic Deadman	DM2270201T
13d	G3 Trigger Sub-Assembly for 3 Position Electric Deadman	DM2270202T





RELATED PRODUCTS



GUARANTEEING **FASTER** JOB SITES

SnakeBite Blast Nozzles

The world's quietest blast nozzle!

- ▶ Up to 16dBA noise reduction
- ▶ Up to 45% less fatigue compared to standard blast nozzles
- ▶ Durable and lightweight

PART NUMBER	DESCRIPTION	BEST SCENARIOS
BNSBXQ1506	#6 SnakeBite Flex Nozzle	Best for blasting in tight spaces and around obstacles like pipe and brackets
BNSBXQ1507	#7 SnakeBite Flex Nozzle	
BNSBXQ1508	#8 SnakeBite Flex Nozzle	
BNSBXQ6-1	#6 SnakeBite XQ Nozzle	Best when you need a higher productivity quiet nozzle but don't have the air to use a Strike
BNSBXQ7-1	#7 SnakeBite XQ Nozzle	
BNSBXQ8-1	#8 SnakeBite XQ Nozzle	
BNSBXQ10-1	#10 SnakeBite Strike Nozzle	Best for blasting acres of steel

Ultra-Tuff Blast Nozzles

- ▶ Shock absorbent
- ▶ Urethane coat to ensure it doesn't break
- ▶ Lightweight - half the weight of conventional tungsten carbide abrasive blast nozzles

PART NUMBER	DESCRIPTION	THREAD TYPE
BNULTRA3C	Ultra-Tuff Nozzle #3 (3/16")	Coarse 2"
BNULTRA4C	Ultra-Tuff Nozzle #4 (1/4")	Coarse 2"
BNULTRA5C	Ultra-Tuff Nozzle #5 (5/16")	Coarse 2"
BNULTRA6C	Ultra-Tuff Nozzle #6 (3/8")	Coarse 2"
BNULTRA7C	Ultra-Tuff Nozzle #7 (7/16")	Coarse 2"
BNULTRA8C	Ultra-Tuff Nozzle #8 (1/2")	Coarse 2"

Nozzle Wear Size Analyzer Gauge

- ▶ Used to determine the internal diameter of a blast nozzle orifice
- ▶ Allows you to determine the level of wear of the blast nozzle
- ▶ Comes with a removable cap and crayon
- ▶ Has size markings to allow you to see quickly what size your nozzle is.

PART NUMBER	DESCRIPTION
INH131PBAG	Nozzle Wear Size Analyser Gauge

RELATED PRODUCTS

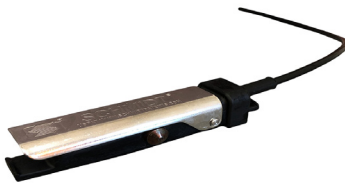


ELECTRIC REMOTE CONTROL DEADMAN EXTENSION CABLE

RENT OR PURCHASE

- ▶ Abrasion-resistant, flex-coated control cable
- ▶ 12 Volt rated for electric deadman controls
- ▶ 3-Pin Twistlock connectors used for all deadman cables

PART NUMBER	DESCRIPTION
DMECKC2552	Standard 2 Core Cable – 2-Prong TwistLocks (55 ft)
DMECKC2553	Standard 2 Core Cable – 3-Prong TwistLocks (55 ft)
DMECKC255HD	Extreme 2 Core Cable – 2-Prong TwistLocks (55 ft)
DMECKC3110-US	Standard 3 Core Cable – 3-Prong TwistLocks (110 ft)
DMECKC355	Standard 3 Core Cable – 3-Prong TwistLocks (55 ft)
DMECKC355HD	Extreme 3 Core Cable – 3-Prong TwistLocks (55 ft)
DMECKC355WP	Standard 3 Core Cable – 3-Prong ScrewType (weatherproof) (55 ft)



RESPONSE DEADMAN HANDLE

RENT OR PURCHASE

- ▶ #1 Deadman in the industry
- ▶ Larger internal ports make it faster acting, making it a safer handle
- ▶ Compact, slimline design – 30% easier than other handles to hold down
- ▶ Simple to make in-field repairs as required

PART NUMBER	DESCRIPTION
DM2263002	Pneumatic Response Deadman Handle
DM22634021	Electric Response Deadman Handle with 3 pin plug



LED BLAST LIGHT

- ▶ 6 LED's giving 1,325 lumens light output blast light
- ▶ Voltage range – 120 v AC or 12-28 v AC/DC
- ▶ Long lasting – the LED blast light lamps will last 20x the life of a halogen globe
- ▶ Hose mounted

PART NUMBER	DESCRIPTION
BABL3475A	Western Technology 3475 LED Blast Light – 3m (10 ft) unfitted



View all of our offerings online.
Free shipping for orders over \$100

RELATED PRODUCTS



GUARANTEEING **SAFER** JOB SITES

TWINLINE PNEUMATIC DEADMAN CONTROL HOSE

RENT OR PURCHASE

- ▶ Bonded, heavy duty, twin rubber hose, color coded for safety
- ▶ Used to supply air to the deadman handle
- ▶ Fitted standard with male-female threaded connectors
- ▶ 1/4" (6 mm) connectors on 'supply' red hose
- ▶ 1/8" (3 mm) connectors on 'return' green hose

PART NUMBER	DESCRIPTION
AHRMS4055	Twinline Pneumatic Deadman Control Hose - 55ft AV

PREMIUM LEATHER BLASTING GLOVES

- ▶ Generous length gauntlet for lower arm protection and soft cotton inner lining for comfort
- ▶ Abrasive resistant threads provides longer life than normal 'welding gloves'
- ▶ Tough, rough-grain finish to give some grip on the blast nozzle

PART NUMBER	DESCRIPTION
NA230	Premium Leather Blasting Gloves - 1 pair

UNFITTED BLAST HOSE – WHIP SUPAFLEX 2-PLY

- ▶ Superior quality, lightweight and highly flexible sandblasting hose
- ▶ Anti-static, natural rubber liner
- ▶ Rated to minimum 175 psi – 3:1 safety factor

PART NUMBER	EXTERNAL OD	INTERNAL ID	SUITS HOSES
BHS1350	1-3/16"	1/2"	50 ft (15m)
BHS2050	1 11/32"	3/4"	50 ft (15m)
BHS2550	1-9/16"	1"	50 ft (15m)
BHS32100	1-7/8"	1-1/4"	100 ft (30m)
BHS3250	1-7/8"	1-1/4"	50 ft (15m)
BHS40100	2-5/32	1-1/2"	100 ft (30m)
BHS4050	2-5/32	1-1/2"	50 ft (15m)

SAFETY WHIPCHECK FOR HOSE CONNECTIONS

- ▶ Use of a safety whipcheck restraint is mandatory on all hoses

PART NUMBER	DESCRIPTION	SUITS HOSES
HFSCA1	SCA-1	Suits hoses 1/2" to 2 1/2" (15 mm to 60 mm) OD
HFSCA2	SCA-2	Suits hoses 2" to 3 1/2" (45 mm to 90 mm) OD

RELATED PRODUCTS



GUARANTEEING **SAFER** JOB SITES

THREADED BLAST QUICK COUPLINGS

- ▶ Superior quality, lightweight and highly flexible sandblasting hose
- ▶ Anti-static, natural rubber liner
- ▶ Rated to minimum 175 psi – 3:1 safety factor

PART NUMBER	ITEM SIZE	THREAD TYPE	COMPOSITION
HFATC1	1 1/4 in	National Pipe Thread (NPT)	Aluminum
HFSTC1	1 1/4 in	National Pipe Thread (NPT)	Steel
HFBTC1	1 1/4 in	National Pipe Thread (NPT)	Brass
HFPTC1	1 1/4 in	Fine 1-1/4" Industrial	Nylon
HFATC12	1/2 in	National Pipe Thread (NPT)	Aluminum
HFBTC2	1 1/2 in	National Pipe Thread (NPT)	Brass
HFPTC2	1 1/2 in	Fine 1-1/4" Industrial	Nylon
HFSTC1BSP	1 1/4 in	British Standard Pipe (BSP)	
HFATC2	1 1/2 in	National Pipe Thread (NPT)	Aluminum
HFSTC2	1 1/2 in	National Pipe Thread (NPT)	Steel
HFATC3	2 in	National Pipe Thread (NPT)	Aluminum
HFSTC3	2 in	National Pipe Thread (NPT)	Steel
HFATC34	3/4 in	National Pipe Thread (NPT)	Aluminum

BLAST HOSE QUICK COUPLINGS

- ▶ Supplied with HFGMRL gasket fitted
- ▶ Standard claw, standard bore coupling

PART NUMBER	CLIP	GASKET	SCREW	SUITS BLAST HOSE WITH OUTSIDE DIAMETER		
BRASS						
HFBQC1	HFCLP2	HFGMRLP	HFSCR4	BH20	BHS25	1 9/16" (40mm)
HFBQC2	HFCLP2	HFGMRLP	HFSCR4	BH25		1 9/16" (40mm)
HFBQC2L	HFCLP2	HFGMRLP	HFSCR4	BH25	BHS32	1 7/8" (48mm)
HFBQC3	HFCLP2	HFGMRLP	HFSCR4	BH32	BHS40	2 5/32" (55mm)
HFBQC4	HFCLP4	HFGMRLP	HFSCR4	BH40		2 3/8" (60mm)
ALUMINUM						
HFAQC1/2	HFCLP2	HFGMRLP	HFSCR4	BH13		1 3/13" (30mm)
HFAQC3/4	HFCLP2	HFGMRLP	HFSCR4	BH13	BHS20	1 11/32 (34mm)
HFAQC1	HFCLP2	HFGMRLP	HFSCR4	BHS20	BHS25	1 9/16" (40mm)
HFAQC2	HFCLP2	HFGMRLP	HFSCR4	BH25	BHS32	1 7/8" (48mm)
HFAQC3	HFCLP2	HFGMRLP	HFSCR4	BH32	BHS40	2 5/32" (55mm)
HFAQC4	HFCLP4	HFGMRLP	HFSCR4	BH40		2 3/8" (60mm)

RELATED PRODUCTS

GUARANTEERING **CLEANER** JOB SITES

ACHIEVE A SUPERIOR CLEAN WITH GMA GARNET BLASTING ABRASIVE

Scientific testing proves GMA Garnet is cleaner to use, and its guaranteed purity will extend your coating life.

In independent laboratory testing, GMA Garnet has been found to contain no unwanted inclusions such as shells, dirt, seaweed or other contaminants – unlike other abrasives. This means that dust clouds are virtually eliminated during blasting.



INDIAN GARNET



GMA GARNET

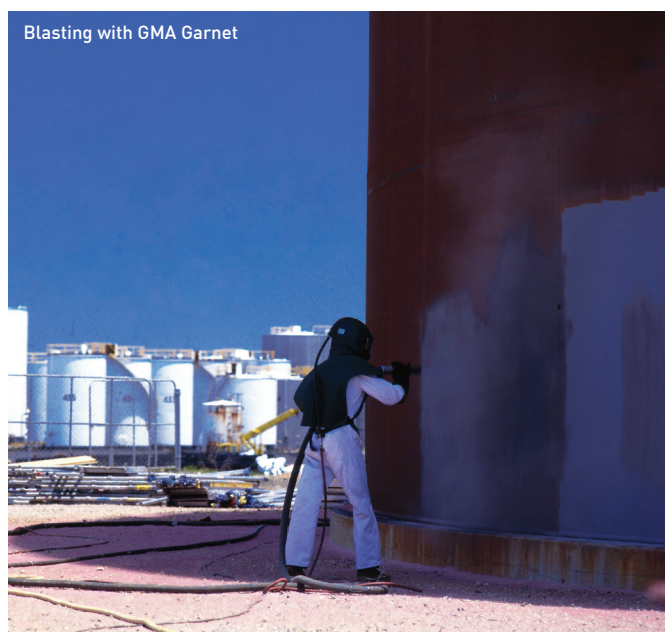
Do the 'shake test' to check the cleanliness of your current abrasive.

The photos (above) illustrate the results of shaking GMA Garnet and Indian Garnet in water together to separate the heavier abrasive from the lightweight contaminants which float in the water.

- Contaminated abrasive leaves a dirty surface, limiting coating life.
- Poorly graded abrasive slows productivity.



Blasting with a dusty abrasive



Blasting with GMA Garnet

BlastOne supplies GMA Garnet abrasive for all applications

GMA ExtremeBlast™

The coarsest grade for the toughest jobs

Removal of exceptionally resistant specialist coatings, heavy liners and marine foulings.

- High surface profile of 3.5-4.5 mil (90-115 µm)
- Blasting rates: Up to 280 ft²/hr (26 m²/hr)

PART NUMBER	GMA EXTREMEBLAST DESCRIPTION
GX32200	2200lb Bulk Bag
GX34400	4400lb Bulk Bag
GX3552200	55lb Bags on 2200lb Skid
GX3554400	55lb Bags on 4400lb Skid
GX3BULK	Bulk Tanker

GMA ToughBlast™

Engineered blend for superior cleaning on tough jobs

Fast removal of high build up coatings and/or heavy rust.

- High surface profile from 3.0-3.75 mil (75-95 µm)
- Blasting rates: Up to 370 ft²/hr (35 m²/hr)

PART NUMBER	GMA TOUGHBlast DESCRIPTION
GX22200	2200lb Bulk Bag
GX24400	4400lb Bulk Bag
GX2552200	55lb Bags on 2200lb Skid
GX2554400	55lb Bags on 4400lb Skid
GX2BULK	Bulk Tanker

GMA PremiumBlast™

Our versatile maintenance grade abrasive

Removal of medium coatings and/or medium-to-heavy rust.

- Efficiently produces surface profile from 3.0-3.75 mil (75-95 µm)
- Blasting rates: Up to 340 ft²/hr (32 m²/hr)

PART NUMBER	GMA PREMIUMBLAST DESCRIPTION
GAPB2200	2200lb Bulk Bag
GAPB4400	4400lb Bulk Bag
GAPB552200	55lb Bags on 2200lb Skid
GAPB554400	55lb Bags on 4400lb Skid

GMA SpeedBlast™

Fast cleaning general purpose abrasive

Fast removal of light-to-medium coatings and/or light-to-medium rust.

- Efficiently produces surface profile from 2.5-3.25 mil (65-85 µm)
- Blasting rates: Up to 350 ft²/hr (33 m²/hr)

PART NUMBER	GMA SPEEDBLAST DESCRIPTION
GX12200	2200lb Bulk Bag
GX14400	4400lb Bulk Bag
GX1552200	55lb Bags on 2200lb Skid
GX1554400	55lb Bags on 4400lb Skid
GX1BULK	Bulk Tanker

GMA NewSteel™

Our ideal abrasive for new steel, lightly rusted surfaces and thin coatings

Unrivaled speed in removing mill scale.

- Produces surface profile from 1.5-2.5 mil (40-65µm)
- Blasting rates: Up to 500 ft²/hr (46m²/hr)

PART NUMBER	GMA NEWSTEEL DESCRIPTION
GANS2200	2200lb Bulk Bag
GANS4400	4400lb Bulk Bag
GANS552200	55lb Bags on 2200lb Skid
GANS554400	55lb Bags on 4400lb Skid
GANSBULK	Bulk Tanker

GMA PrecisionBlast™

Our ideal abrasive for fast gentle cleaning on precision equipment and vulnerable surfaces

Removal of mill scale, glass etching and surface preparation of stainless steel, aluminum and titanium.

- Produces surface profile of 1.0-2.0 mil (25-50µm) or less
- Blasting rates: Up to 330 ft²/hr (31m²/hr)

PART NUMBER	GMA PRECISIONBLAST DESCRIPTION
GA1202200	2200lb Bulk Bag
GA1204400	4400lb Bulk Bag
GA120552200	55lb Bags on 2200lb Skid
GA120554400	55lb Bags on 4400lb Skid
GA120BULK	Bulk Tanker

GMA SoftBlast™

Our softest product, enabling cleaning and polishing of the most delicate surfaces

Extremely delicate blasting, cleaning and polishing.

- Produces surface profile of 0.5-1.0 mil (12-25µm) or less
- Blasting rates : Up to 300 ft²/hr (28m²/hr)

PART NUMBER	GMA SOFTBLAST DESCRIPTION
GA2002200	2200lb Bulk Bag
GA200552200	4400lb Bulk Bag
GA3502200	55lb Bags on 2200lb Skid
GA350552200	55lb Bags on 4400lb Skid



AUSTRALIA

Adelaide | Darwin | Brisbane | Mackay |
Sydney | Newcastle | Melbourne |
Perth | Port Hedland

1800 190 190
sales.au@blastone.com

NEW ZEALAND

Auckland | Christchurch

0800 190 190
sales.nz@blastone.com

MALAYSIA

Kuala Lumpur

03 7725 0371
sales.my@blastone.com

NORTH AMERICA

Columbus | Los Angeles | Chicago |
Minneapolis | Hampton Roads |
Jacksonville | Houston

1 800 999 1881
sales@blastone.com

RELATED PRODUCTS

GUARANTEEING **CLEANER** JOB SITES

ACHIEVE A SUPERIOR CLEAN WITH GMA GARNET BLASTING ABRASIVE

Scientific testing proves GMA Garnet is cleaner to use, and its guaranteed purity will extend your coating life.

In independent laboratory testing, GMA Garnet has been found to contain no unwanted inclusions such as shells, dirt, seaweed or other contaminants – unlike other abrasives. This means that dust clouds are virtually eliminated during blasting.



INDIAN GARNET



GMA GARNET

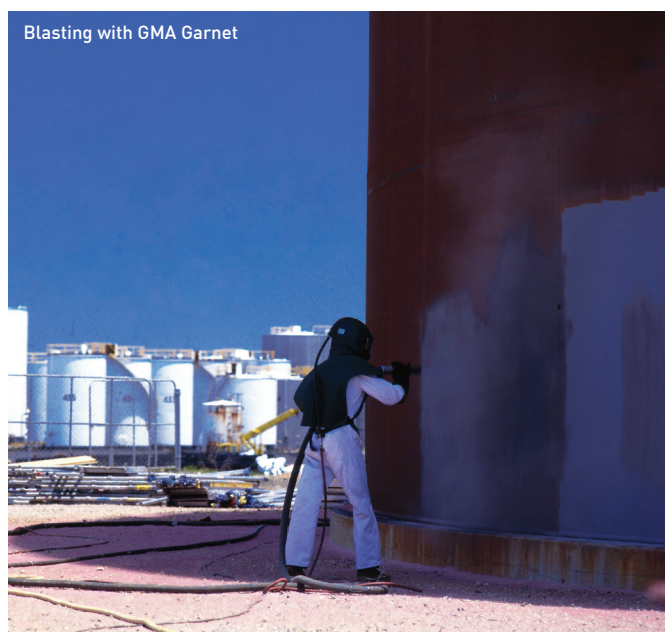
Do the 'shake test' to check the cleanliness of your current abrasive.

The photos (above) illustrate the results of shaking GMA Garnet and Indian Garnet in water together to separate the heavier abrasive from the lightweight contaminants which float in the water.

- Contaminated abrasive leaves a dirty surface, limiting coating life.
- Poorly graded abrasive slows productivity.



Blasting with a dusty abrasive



Blasting with GMA Garnet

BlastOne supplies GMA Garnet abrasive for all applications

GMA ExtremeBlast™

The coarsest grade for the toughest jobs

Removal of exceptionally resistant specialist coatings, heavy liners and marine foulings.

- High surface profile of 3.5-4.5 mil (90-115 µm)
- Blasting rates: Up to 280 ft²/hr (26 m²/hr)

PART NUMBER	GMA EXTREMEBLAST DESCRIPTION
GX32200	2200lb Bulk Bag
GX34400	4400lb Bulk Bag
GX3552200	55lb Bags on 2200lb Skid
GX3554400	55lb Bags on 4400lb Skid
GX3BULK	Bulk Tanker

GMA ToughBlast™

Engineered blend for superior cleaning on tough jobs

Fast removal of high build up coatings and/or heavy rust.

- High surface profile from 3.0-3.75 mil (75-95 µm)
- Blasting rates: Up to 370 ft²/hr (35 m²/hr)

PART NUMBER	GMA TOUGHBlast DESCRIPTION
GX22200	2200lb Bulk Bag
GX24400	4400lb Bulk Bag
GX2552200	55lb Bags on 2200lb Skid
GX2554400	55lb Bags on 4400lb Skid
GX2BULK	Bulk Tanker

GMA PremiumBlast™

Our versatile maintenance grade abrasive

Removal of medium coatings and/or medium-to-heavy rust.

- Efficiently produces surface profile from 3.0-3.75 mil (75-95 µm)
- Blasting rates: Up to 340 ft²/hr (32 m²/hr)

PART NUMBER	GMA PREMIUMBLAST DESCRIPTION
GAPB2200	2200lb Bulk Bag
GAPB4400	4400lb Bulk Bag
GAPB552200	55lb Bags on 2200lb Skid
GAPB554400	55lb Bags on 4400lb Skid

GMA SpeedBlast™

Fast cleaning general purpose abrasive

Fast removal of light-to-medium coatings and/or light-to-medium rust.

- Efficiently produces surface profile from 2.5-3.25 mil (65-85 µm)
- Blasting rates: Up to 350 ft²/hr (33 m²/hr)

PART NUMBER	GMA SPEEDBLAST DESCRIPTION
GX12200	2200lb Bulk Bag
GX14400	4400lb Bulk Bag
GX1552200	55lb Bags on 2200lb Skid
GX1554400	55lb Bags on 4400lb Skid
GX1BULK	Bulk Tanker

GMA NewSteel™

Our ideal abrasive for new steel, lightly rusted surfaces and thin coatings

Unrivalled speed in removing mill scale.

- Produces surface profile from 1.5-2.5 mil (40-65µm)
- Blasting rates: Up to 500 ft²/hr (46m²/hr)

PART NUMBER	GMA NEWSTEEL DESCRIPTION
GANS2200	2200lb Bulk Bag
GANS4400	4400lb Bulk Bag
GANS552200	55lb Bags on 2200lb Skid
GANS554400	55lb Bags on 4400lb Skid
GANSBULK	Bulk Tanker

GMA PrecisionBlast™

Our ideal abrasive for fast gentle cleaning on precision equipment and vulnerable surfaces

Removal of mill scale, glass etching and surface preparation of stainless steel, aluminum and titanium.

- Produces surface profile of 1.0-2.0 mil (25-50µm) or less
- Blasting rates: Up to 330 ft²/hr (31m²/hr)

PART NUMBER	GMA PRECISIONBLAST DESCRIPTION
GA1202200	2200lb Bulk Bag
GA1204400	4400lb Bulk Bag
GA120552200	55lb Bags on 2200lb Skid
GA120554400	55lb Bags on 4400lb Skid
GA120BULK	Bulk Tanker

GMA SoftBlast™

Our softest product, enabling cleaning and polishing of the most delicate surfaces

Extremely delicate blasting, cleaning and polishing.

- Produces surface profile of 0.5-1.0 mil (12-25µm) or less
- Blasting rates : Up to 300 ft²/hr (28m²/hr)

PART NUMBER	GMA SOFTBLAST DESCRIPTION
GA2002200	2200lb Bulk Bag
GA200552200	4400lb Bulk Bag
GA3502200	55lb Bags on 2200lb Skid
GA350552200	55lb Bags on 4400lb Skid