

- Long filter life and high filtration efficiency on many applications
- MERV* 10 filtration efficiency rating per ASHRAE 52.2-2007
- Enhanced performance due to a unique combination of fiber sizes and a more uniform fiber distribution indicates excellent performance
- Reduced energy requirements and lower operating costs due to low resistance to airflow
- Flame retardant media available
- Superior to felts, fabrics, cotton cloths, and similar media

APPLICATIONS

- Recommended for a wide variety of applications
- Good choice for dry, coarse particulate
- Economical choice for operations with forced or cyclical filter replacement (independent of pressure drop)

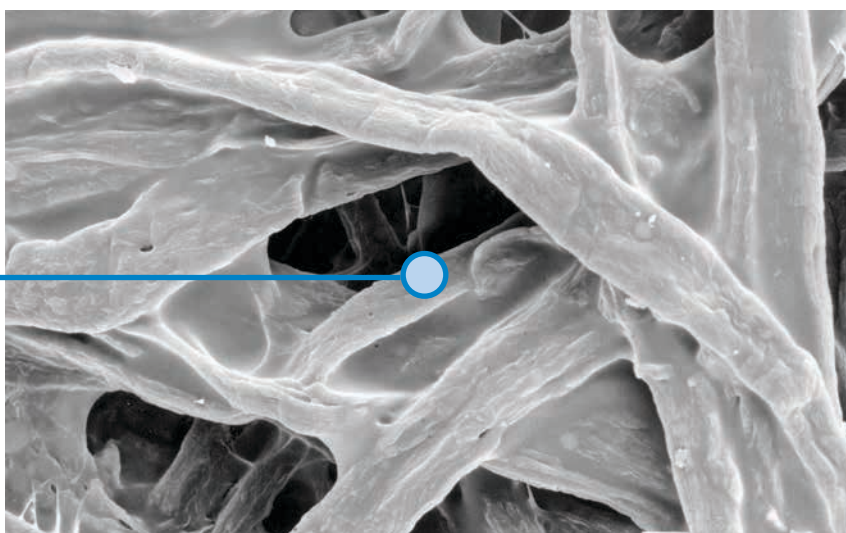


Cellulex Cartridge

SEM† IMAGES

1 micron = 1/25,400 of an inch (1/1000 of a millimeter)

10 micron



Cellulex Media (600x)

† Scanning Electron Microscope

* Refer to Minimum Efficiency Reporting Value on page 2.

SPECIFICATIONS

MEDIA COMPOSITION	
Substrate	Proprietary blend of cellulose fibers Flame retardant version per UL [†] Standard 558, TAPPI Standard T 461 cm-09
CARTRIDGE CONSTRUCTION	
Standard Construction	Galvanized metal end caps Galvanized expanded metal liner 72% open area Urethane gasket
Options	Optional stainless steel liner and end caps

MEDIA EFFICIENCY	
U.S. Efficiency Rating	MERV* 10 per ASHRAE 52.2-2007
MEDIA COMPATIBILITY DATA	
Temperature Resistance	180°F / 82°C
Moisture Absorption**	Maximum 14% @ 70°F (21°C) and 65% RH
Chemical Tolerance***	Acids→Poor Oxidants→Poor Bases→Fair Solvents→Fair
Abrasion Resistance	Good per TAPPI 476 (Taber Method)

CURRENT AVAILABLE CONFIGURATIONS

Collector Models		Filter Area		Dimensions		Cellulex		
		ft²	m²	in	mm	Standard	FR	NL
Ambient Air Tubesheets	Coned	260	24.2	12.7 x 15.9 x 26	322.6 x 403.9 x 660.4	•	•	•
	Cylindrical	226	21.0	12.74 x 26	323.6 x 660.4	•	•	•
	Downflo Oval (DFO)	190	17.6	11.4 x 14.4 x 26	289.6 x 365.8 x 660.4	•	•	•
AerBooth		226	21.0	12.74 x 26	323.6 x 660.4	•	•	•
AT-3000		212	19.7	13.84 x 22	351.5 x 558.8		•	
Bin Vent (TBV)		226	21.0	12.74 x 26	323.6 x 660.4	•	•	•
CX Series		254	23.6	13.84 x 26	351.5 x 660.4	•	•	
Downdraft Bench		254	23.6	13.84 x 26	351.5 x 660.4	•	•	
Downflo® (DF)		226	21.0	12.74 x 26	323.6 x 660.4	•	•	•
Downflo II (DFT)		254	23.6	13.84 x 26	351.5 x 660.4	•	•	•
Downflo (SDF)		103	9.6	9.21 x 22.3	233.9 x 566.2	•		
Environmental Control Booth™ (ECB)		226	21.0	12.74 x 26	323.6 x 660.4	•	•	•
MTD		226	21.0	12.74 x 26	323.6 x 660.4	•	•	•
ProBooth™		226	21.0	12.74 x 26	323.6 x 660.4	•	•	•
ShopPro™		65	6.0	16.6 x 10.1	421.6 x 256.5	•		
		135	12.5	16.6 x 20.1	421.6 x 510.5	•		
		177	16.4	16.6 x 26.1	421.6 x 662.9	•		
TD Large		226	21.0	12.74 x 26	323.6 x 660.4	•	•	•
TD Small		60	5.6	7.9 x 16	200.7 x 406.4	•		

† UL is a registered trademark of Underwriters Laboratories, Inc.

* The Minimum Efficiency Reporting Value (MERV) of this filter cartridge has been determined through independent laboratory testing using ASHRAE 52.2 (2007) test standards. The MERV rating was determined at a face velocity of 118 feet per minute (36.0 meters per minute) and loading up to four inches (101.6 millimeters) water gauge. Actual efficiency of any filter cartridge will vary according to the specific application parameters. Dust concentration, airflow, particle characteristics, and pulse cleaning methods all affect filtration efficiency.

** Environmental conditions involving combinations of high temperature, corrosive material, and moisture can reduce media strength. Reduction in media strength may compromise cartridge integrity and performance.

*** A combination of chemicals may alter fiber resistance to the specified performance level. Chemical attack may compromise cartridge integrity and performance.

Significantly improve the performance of your collector with genuine Donaldson Torit replacement filters and parts. **Call Donaldson Torit at 800-365-1331.**

Important Notice

Many factors beyond the control of Donaldson can affect the use and performance of Donaldson products in a particular application, including the conditions under which the product is used. Since these factors are uniquely within the user's knowledge and control, it is essential the user evaluate the products to determine whether the product is fit for the particular purpose and suitable for the user's application. All products, product specifications, availability and data are subject to change without notice, and may vary by region or country.



Donaldson Company, Inc.
Minneapolis, MN
donaldsontorit.com • shop.donaldson.com

North America
Email: donaldsontorit@donaldson.com
Phone: (USA): +1-800-365-1331 • (MX): +1-800-343-36-39

Australasia
Email: marketing.australia@donaldson.com
Phone: +61-2-4350-2000
Toll Free: (AU) +1800-345-837 • (NZ) +0800-743-387
F118114 ENG (02/20) Cellulex Cartridge ©2011-2020 Donaldson Company, Inc.
Donaldson, Torit, Cellulex, Downflo, ProBooth, ShopPro and the color blue are marks of Donaldson Company, Inc. All other marks belong to their respective owners.

China
Email: info.cn@donaldson.com
Phone: +86-400-820-1038

Donaldson Europe B.V.B.A.
Email: IAF-europe@donaldson.com
Phone: +32-16-38-3811

India
Email: info.difs@donaldson.com
Phone: +91-124-4807-400 • +18001035018

Japan
Email: jp-ndl.ifsw@donaldson.com
Phone: +81-42-540-4112

Korea
Email: iaf-kr@donaldson.com
Phone: +82-2-517-3333

Latinoamerica
Email: IndustrialAir@donaldson.com
Phone: +52-449-300-2442

South Africa
Email: SAMarketing@donaldson.com
Phone: +27-11-997-6000

Southeast Asia
Email: IAFSEA@donaldson.com
Phone: +65-6311-7373

- Extended filter life over traditional untreated cellulose on applications requiring a sturdier, more humidity resistant media
- Stronger and more durable than conventional cellulose media due to exclusive media construction and a unique resin system
- Special media treatment allows filters to maintain low airflow restriction in humid operating conditions, resulting in reduced energy requirements and lower operating costs
- MERV* 10 filtration efficiency rating per ASHRAE Standard 52.2-2007
- Flame retardant media available



Endura-Tek Cartridge

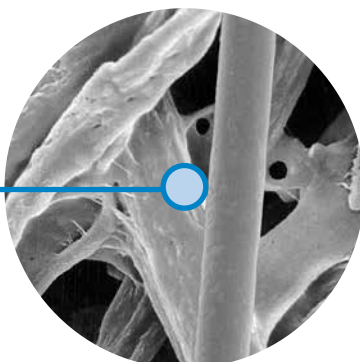
APPLICATIONS

- Recommended for a wide variety of applications
- Economical solution to applications where untreated cellulose cartridges begin to fail
- Economical choice for operations with scheduled filter replacement independent of pressure drop

SEM IMAGES²

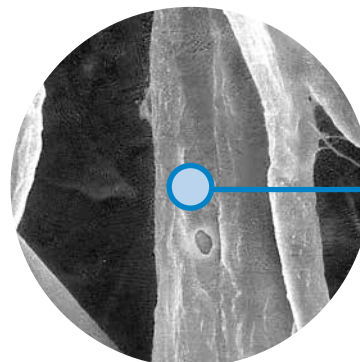
1 micron = 1/25,400 of an inch
(1/1000 of a millimeter)

10 micron



Endura-Tek Media (600x)

10 micron



Competitive Media (600x)

SPECIFICATIONS

MEDIA COMPOSITION		MEDIA EFFICIENCY	
Substrate	Proprietary blend of cellulose and synthetic fibers	U.S. Efficiency Rating	MERV* 10 per ASHRAE 52.2-2007
CARTRIDGE CONSTRUCTION		MEDIA COMPATIBILITY DATA	
Standard Construction	Galvanized expanded metal liners 72% open area Galvanized metal end caps	Temperature Resistance	180°F 82°C
Structural Integrity	Donaldson's Pleatloc™ design maintains uniform pleat spacing throughout filter life Adhesive spiral beading inside the filter secures pleats and reduces pleat tip abrasion	Moisture Absorption**	Maximum 14% @ 70°F (21°C) and 65% RH
Top Gasket	Molded one-piece urethane gaskets provide a positive, airtight seal	Chemical Tolerance***	Acids→Poor Oxidants→Poor Bases→Fair Solvents→Fair
		Abrasion Resistance	Excellent per TAPPI 476 (Taber Method)

CURRENT AVAILABLE CONFIGURATIONS

Collector Models	m ²	Cartridge Dimensions		Endura-Tek	Endura-Tek FR
		in	mm		
AerTable	22.3	12.74 x 26	323.6 x 660.4	•	•
Bin Vent (TBV)	21.0	12.74 x 26	323.6 x 660.4	•	•
Downdraft Bench	23.5	13.84 x 26	351.5 x 660.4	•	•
Downflo® (DF)	21.0	12.74 x 26	323.6 x 660.4	•	•
Downflo® II (DFT)	23.5	13.84 x 26	351.5 x 660.4	•	•
Downflo® Containment System (DCS)	17.7	11.4 x 14.4 x 26	289.6 x 365.8 x 660.4	•	
Downflo® Oval (DFO)	17.7	11.4 x 14.4 x 26	289.6 x 365.8 x 660.4	•	
Downflo® Workstation (DWS)	17.7	11.4 x 14.4 x 26	289.6 x 365.8 x 660.4	•	
Environmental Contro Booth (ECB)	21.0	12.74 x 26	323.6 x 660.4	•	•
MTD	21.0	12.74 x 26	323.6 x 660.4	•	•
ProBooth™	21.0	12.74 x 26	323.6 x 660.4	•	•
TD Large	21.0	12.74 x 26	323.6 x 660.4	•	•
TD Small	5.5	7.9 x 16	200.7 x 406.4	•	•
WeldAir	17.2	13.84 x 18	351.5 x 457.2		•

* The Minimum Efficiency Reporting Value (MERV) of this filter cartridge has been determined through independent laboratory testing using ASHRAE 52.2 (2007) test standards. The MERV rating was determined at a face velocity of 118 feet (36.0 meters) per minute and loading up to 4 inches (101.6 millimeters) water gauge. Actual efficiency of any filter cartridge will vary according to the specific application parameters. Dust concentration, airflow, particle characteristics, and pulse cleaning methods all affect filtration efficiency.

** Environmental conditions involving combinations of high temperature, corrosive material, and moisture can reduce media strength. Reduction in media strength may compromise cartridge integrity and performance.

*** A combination of chemicals may alter fiber resistance to the specified performance level. Chemical attack may compromise cartridge integrity and performance.

Significantly improve the performance of your collector with genuine Donaldson Torit replacement filters and parts. **Call Donaldson Torit at 800-365-1331.**

Important Notice

Many factors beyond the control of Donaldson can affect the use and performance of Donaldson products in a particular application, including the conditions under which the product is used. Since these factors are uniquely within the user's knowledge and control, it is essential the user evaluate the products to determine whether the product is fit for the particular purpose and suitable for the user's application. All products, product specifications, availability and data are subject to change without notice, and may vary by region or country.



Donaldson Company, Inc.
Minneapolis, MN
donaldson.com • shop.donaldson.com

North America
Email: donaldsontorit@donaldson.com
Phone: (USA): +1-800-365-1331 • (MX): +1-800-343-36-39

Australasia
Email: marketing.australia@donaldson.com
Phone: +61-2-4350-2000
Toll Free: (AU) +1800-345-837 • (NZ) +0800-743-387

F118115 ENG (02/20) Endura-Tek Cartridge ©2012-2020 Donaldson Company, Inc.

Donaldson, Torit, Endura-Tek, Downflo, ProBooth and the color blue are marks of Donaldson Company, Inc. All other marks belong to their respective owners.

China
Email: info.cn@donaldson.com
Phone: +86-400-820-1038

Donaldson Europe B.V.B.A.
Email: IAF-europe@donaldson.com
Phone: +32-16-38-3811

India
Email: info.difs@donaldson.com
Phone: +91-124-4807-400 • +18001035018

Japan
Email: jp-ndi.ifsweb@donaldson.com
Phone: +81-42-540-4112

Korea
Email: iaf-kr@donaldson.com
Phone: +82-2-517-3333

Latinoamerica
Email: IndustrialAir@donaldson.com
Phone: +52-449-300-2442

South Africa
Email: SAMarketing@donaldson.com
Phone: +27-11-997-6000

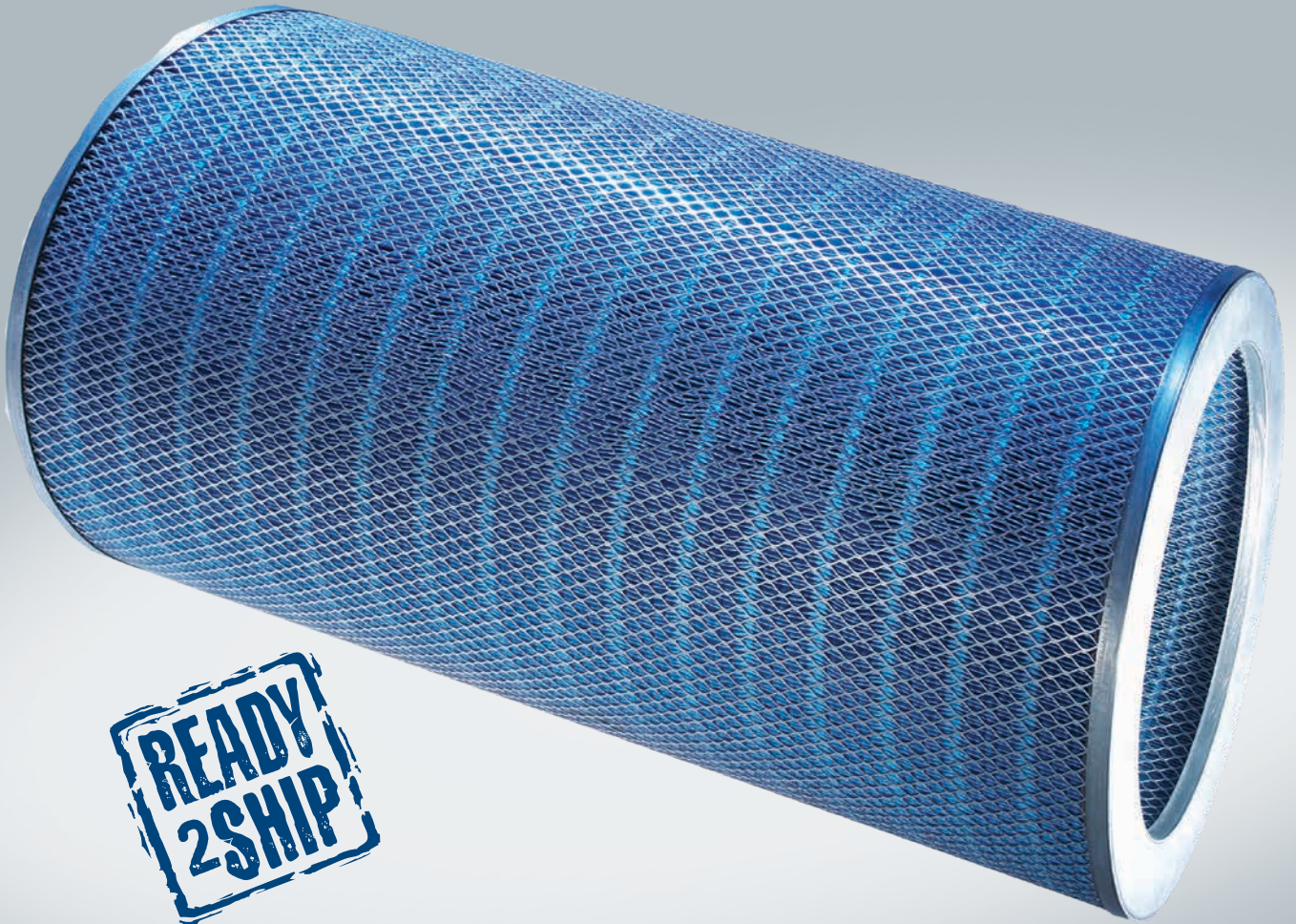
Southeast Asia
Email: IAFSEA@donaldson.com
Phone: +65-6311-7373

Donaldson[®]
Torit[®]

ULTRA-WEB[®]

ULTRA-WEB[®]

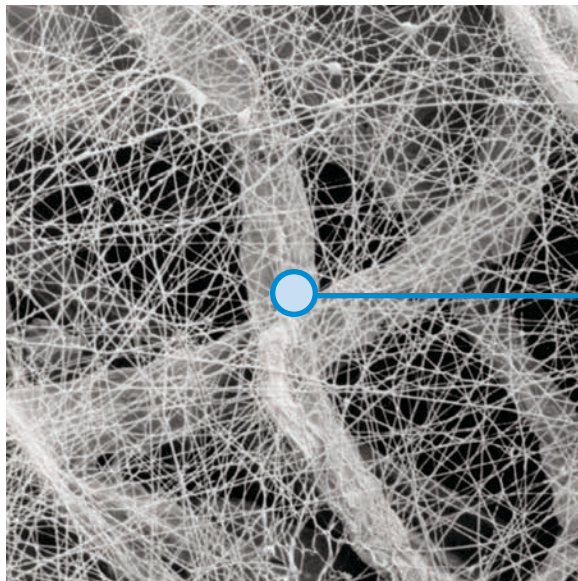
High Efficiency Fine Fiber Filters Built to Last



PROPRIETARY TECHNOLOGY THAT PERFORMS

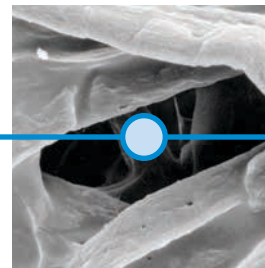
Proven and proprietary Ultra-Web® technology delivers longer filter life, cleaner air and greater cost savings than other types of cartridge filter media. Made with an electrospinning process that produces a very fine, continuous, resilient fiber of 0.2-0.3 micron in diameter, Ultra-Web forms a permanent fine fiber web with very fine interfiber spaces that trap dust on the surface of the media.

- Superior media is more efficient in capturing submicron dust particles
- Longer filter life and better pulse cleaning due to surface loading technology
- Lower energy and less compressed air use with better pulse cleaning and lower operating pressure drop
- MERV 15 and 14 filtration efficiencies to meet specific application needs

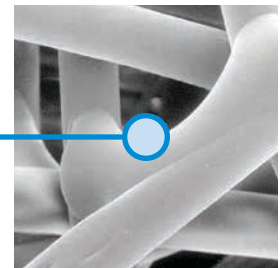


ULTRA-WEB TECHNOLOGY

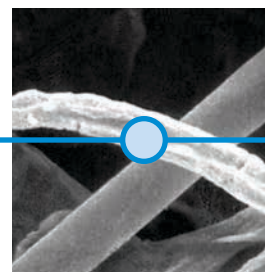
10 MICRON
PARTICULATE
AT 600X



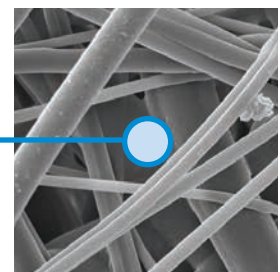
CELLULOSE



SPUNBOND



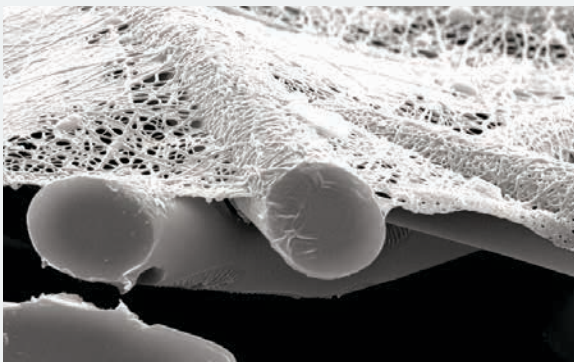
CELLULOSE/SYNTHETIC



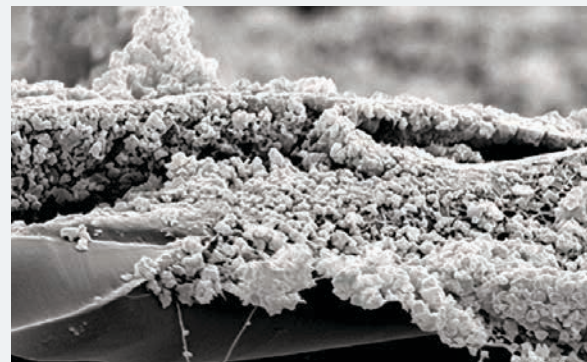
MELTBLOWN

1 micron = 1/25,400 of an inch (1/1,000 of a millimeter)

CLEAN ULTRA-WEB FILTER



SURFACE-LOADED ULTRA-WEB FILTER (SUBSTRATE STILL CLEAN)



Ultra-Web fine fiber media is loaded with ISO fine dust. Dust particles collect on the surface of the media and clean off easily while the substrate stays clean. A depth-loading filter would allow dust particles to penetrate deeply into the substrate where they build up and restrict airflow.

COUNT ON SIGNIFICANT SAVINGS

Savvy engineers with their eye on the bottom line know that Ultra-Web equals significant cost savings. Ultra-Web filters last longer, resulting in fewer filter changes, lower replacement and labor costs, and less production downtime. With lower pressure drop due to surface loading of dust, the energy and compressed air costs are also dramatically lower. For proven technology that delivers energy, maintenance and filter cost savings, there's only one solution — Ultra-Web.

LOWER PRESSURE DROP SAVES ENERGY		
	80/20 MEDIA BLEND	ULTRA-WEB FINE FIBER MEDIA
CARTRIDGE FILTER	24	24
AIRFLOW ACFM	18,000	18,000
OPERATING DELTA P	4"	2"
MOTOR HP	50	40
BRAKE HP	42.1	35.2
KILOWATT HOURS	51,400	25,700
ANNUAL ENERGY USAGE (IN DOLLARS)	\$5,140	\$2,570
ULTRA-WEB SAVINGS	NA	\$2,570

This is one example of energy savings due to lower pressure drop. Energy savings can further increase with larger collectors. These energy savings are calculated based on the following assumptions: Cartridge collector running 4000 hours per year and energy costs are 10 cents per kilowatt hour.

ULTRA-WEB®
CUTS ENERGY COSTS
IN HALF

FEWER CHANGEOUTS SAVE ENERGY, MAINTENANCE & FILTER COSTS



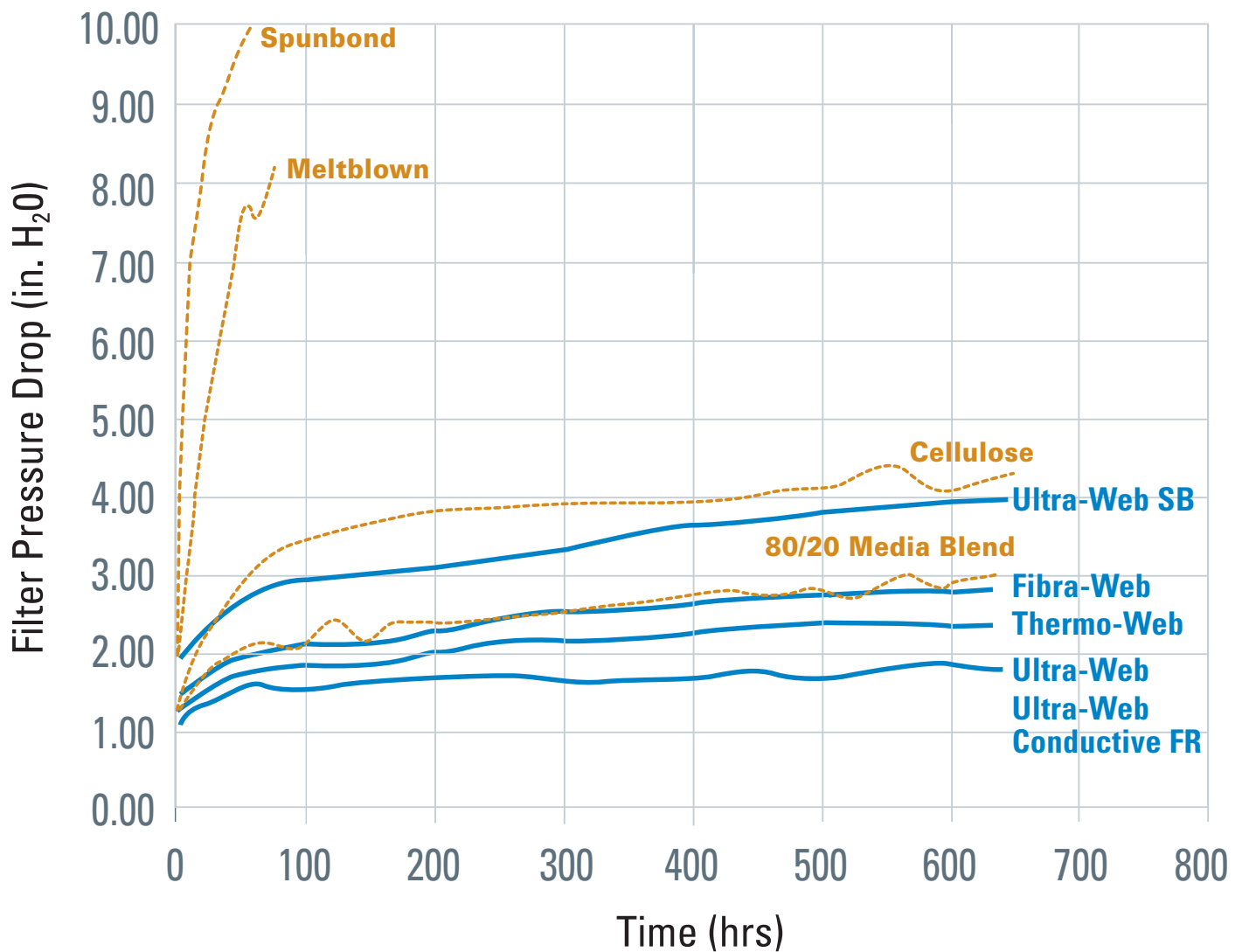
NUMBER OF ULTRA-WEB CARTRIDGES	ANNUAL MAINTENANCE & FILTER COST SAVINGS	ANNUAL COMPRESSED AIR SAVINGS	ANNUAL ENERGY SAVINGS	TOTAL ANNUAL SAVINGS
8	\$729	\$560	\$857	\$2,164
12	\$1,093	\$560	\$1,285	\$2,938
24	\$2,187	\$672	\$2,570	\$5,429
36	\$3,280	\$1,008	\$3,855	\$8,143
48	\$4,374	\$672	\$5,140	\$10,186
72	\$6,561	\$1,008	\$7,710	\$15,279
96	\$8,748	\$1,120	\$10,280	\$20,148
128	\$11,664	\$1,120	\$13,707	\$26,491

Maintenance and filter replacement calculations are based on a comparison of 80/20 media blend cartridges and Ultra-Web fine fiber cartridges. 80/20 media filters are replaced after six months. Ultra-Web filters provide twice the life of 80/20 media filters. 80/20 media filters are priced at \$85 each, Ultra-Web filters are \$132 each. Labor rate equals \$50 per hour, filters are replaced at a rate of 16 filters/hour and disposal costs are \$50/drum.

3 DECADES OF LONGER LIFE

For more than three decades, Donaldson Torit has advanced our Ultra-Web technology to provide a complete line of cartridge filters that last up to twice as long as commodity cellulose and cellulose/synthetic (80/20) blend medias. Pressure drop starts high and rises quickly with depth-loading commodity filters, resulting in shorter filter life and greater energy use. Ultra-Web's surface loading technology is scientifically proven to provide lower operating pressure drop over a longer period of time, which allows the filter to last longer while requiring less energy.

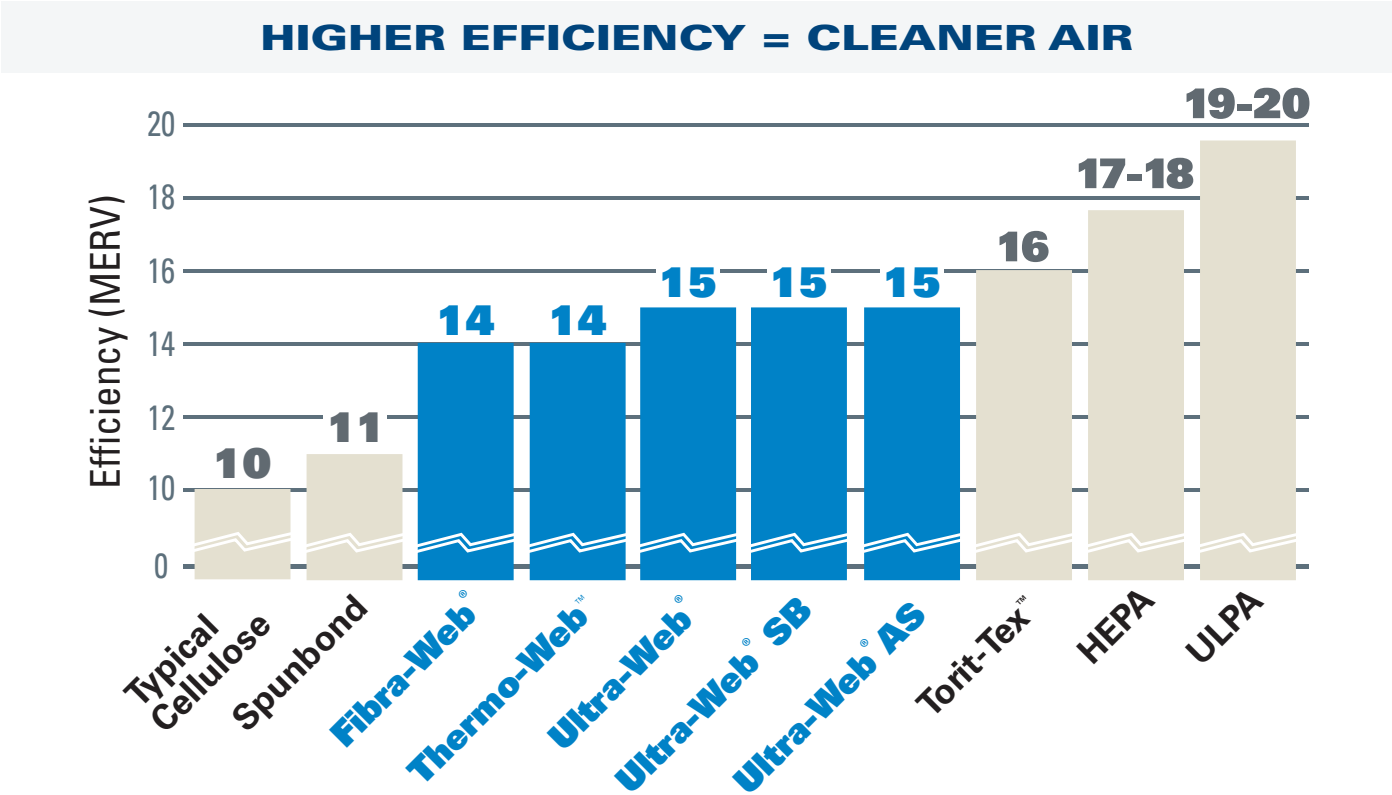
LOWER PRESSURE DROP = LONGER FILTER LIFE



Results were derived testing Atomite test dust in an 8-cartridge collector @1.0 gr./cu.ft, Goyen Millennium valves, 90 psi cleaning pressure, 100ms on time 10 second off time. Airflow goal = 4064 scfm.

ENGINEERED TO PERFECTION

A filter must be rated at least a MERV 13 on the ASHRAE 20-point scale to effectively filter submicron dust particles. Donaldson® Torit® has perfected our standard pre-HEPA MERV 15-rated Ultra-Web cartridge filters to optimize filtration without sacrificing filter life or increasing pressure drop.



Ultra-Web MERV 14 and 15 efficiency has been certified by independent lab tests and tested per the ASHRAE Standard 52.2-2007.

CARTRIDGE FILTER	MERV	3-10 µm	1-3 µm	0.3-1 µm
Ultra-Web	15	X	X	X
Ultra-Web SB	15	X	X	X
Ultra-Web Conductive FR	15	X	X	X
Fibra-Web	14	X	X	X
Thermo-Web	14	X	X	X
Typical Spunbond	11	X	X	X*
Typical Cellulose	10	X	X	X*
Typical 80/20 Blend	10	X	X	X*

Ultra-Web efficiently captures submicron dust particulate. Cellulose and 80/20 blend media are not efficient enough to rate on submicron dust particulate. Typical cellulose and 80/20 blend media are rated to capture 1-3 micron dust particles and some competitive 80/20 blend media is only rated to capture larger 3-10 micron particulate. * Not efficient enough to rate



HIGH EFFICIENCY FINE FIBER FILTERS BUILT TO LAST

Ultra-Web filters ship in 24 hours and are available for all popular collectors.



- AAF®
- Aercology®
- Airflow® Systems
- Clemco®
- Environmental Systems Designs
- Farr
- Geoff
- MAC
- Micro Air®
- Nordson
- Pneumafil
- Robovent®
- Steelcraft®
- Trion®
- UAS®
- Wheelabrator
- + Many others

Industry-Leading Technology

- Advanced filtration technology for optimal performance
- Reduced energy consumption and cost of ownership
- Advanced design and testing capabilities

The Most Filters and Parts

- For every brand and style of collector
- Wide range of filtration media for any application
- 90,000 filters and parts in stock and ready to ship

Unparalleled Support

- Live technical specialists
- Comprehensive pre- and post-sale support
- 40 manufacturing plants and 14 distribution centers worldwide

Significantly improve the performance of your collector with genuine Donaldson Torit replacement filters and parts. **Call Donaldson Torit at 800-365-1331.**

Important Notice

Many factors beyond the control of Donaldson can affect the use and performance of Donaldson products in a particular application, including the conditions under which the product is used. Since these factors are uniquely within the user's knowledge and control, it is essential the user evaluate the products to determine whether the product is fit for the particular purpose and suitable for the user's application. All products, product specifications, availability and data are subject to change without notice, and may vary by region or country.



Donaldson.

Donaldson Company, Inc.
Minneapolis, MN
donaldsontorit.com • shop.donaldson.com

North America
Email: donaldsontorit@donaldson.com
Phone: (USA): +1-800-365-1331 • (MX): +1-800-343-36-39

Australasia
Email: marketing.australia@donaldson.com
Phone: +61-2-4350-2000
Toll Free: (AU) +1800-345-837 • (NZ) +0800-743-387

F118043 ENG (02/20) Ultra-Web ©2016-2020 Donaldson Company, Inc.
Donaldson, Torit, Ultra-Web, and the color blue are marks of Donaldson Company, Inc. All other marks belong to their respective owners.

China
Email: info.cn@donaldson.com
Phone: +86-400-820-1038

Donaldson Europe B.V.B.A.
Email: IAF-europe@donaldson.com
Phone: +32-16-38-3811

India
Email: info.difs@donaldson.com
Phone: +91-124-4807-400 • +18001035018

Japan
Email: jp-ndl.ifsweb@donaldson.com
Phone: +81-42-540-4112

Korea
Email: iaf-kr@donaldson.com
Phone: +82-2-517-3333

Latinoamerica
Email: IndustrialAir@donaldson.com
Phone: +52-449-300-2442

South Africa
Email: SAMarketing@donaldson.com
Phone: +27-11-997-6000

Southeast Asia
Email: IAFSEA@donaldson.com
Phone: +65-6311-7373

ENGINEERED FOR DUST COLLECTION

Ultra-Web® SB cartridge filters offer the unmatched surface loading capabilities of our standard Ultra-Web filters with a spunbond substrate that stands up to more abrasive dusts, harsh chemicals and moisture.

The proprietary Donaldson Ultra-Web media employs a web of very fine, resilient fiber 0.2-0.3 microns in diameter to catch submicron dust particles at the surface of the filter. This prevents particulates from settling in deep in the filter substrate, allowing Ultra-Web SB cartridge filters to last up to twice as long as traditional filters. The result is a filter that lasts longer, cleans better and costs less to operate than competitive filters. A wide range of styles and sizes fit most popular brands and styles of collector.

FEATURES & BENEFITS

- Fine fiber technology ensures longer filter life at a significantly lower pressure drop
- Tough spunbond polyester substrate provides high durability
- MERV* 15 filtration efficiency rating per ASHRAE 52.2-2007
- Wide pleat spacing allows thorough pulse cleaning of fine, fibrous, and agglomerative dust
- Lower pressure drop saves energy
- Longer filter life reduces replacement, maintenance cost, and production downtime
- Spunbond substrate provides excellent moisture and chemical resistance



Ultra-Web SB Cartridge

THE ULTRA-WEB ADVANTAGE IS CLEANER AIR

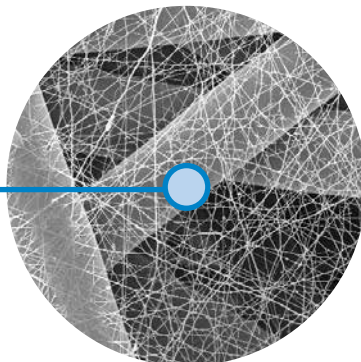
Ultra-Web® is proprietary and made with an electrospinning process that produces a very fine, continuous, resilient fiber of 0.2-0.3 micron in diameter to form a permanent web-like net. This fine fiber “web” with its very fine interfiber spaces is constructed onto tough spunbond substrate media, resulting in:

- A more robust media that captures even submicron dust on the surface
- Better pulse cleaning and lower pressure drop
- Cleaner air, longer filter life, and greater cost savings

SEM IMAGES²

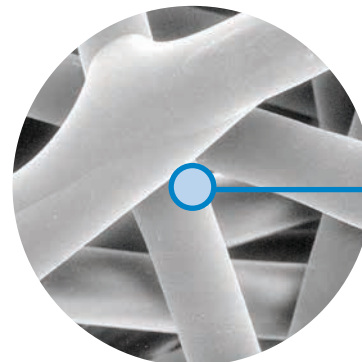
1 micron = 1/25,400 of an inch
(1/1000 of a millimeter)

10 micron



Ultra-Web on Spunbond† (600x)

10 micron



Spunbond (600x)

† Scanning Electron Microscope

* Refer to Minimum Efficiency
Reporting Value on page 2.

SPECIFICATIONS

MEDIA COMPOSITION	
Fine Fiber Technology	Proprietary synthetic fine fibers Mean fiber diameter of 0.2 µm
Substrate	Spunbond polyester
MEDIA COMPATIBILITY DATA	
Temperature Resistance	180°F / 82°C
Moisture Absorption**	0.2 - 0.5% @ 70°F (21°C) and 65% RH
Chemical Tolerance***	Acids→Good Oxidants→Good Bases→Good Solvents→Good
Abrasion Resistance	Excellent per TAPPI 476 (Taber Method)

CARTRIDGE CONSTRUCTION	
Standard Construction	Galvanized metal end caps Galvanized expanded metal liners (60% open area) Urethane gasket Wide pleat spacing
Options	Stainless steel liner and end caps

MEDIA EFFICIENCY	
U.S. Efficiency Rating	MERV* 15 per ASHRAE 52.2-2007

CONFIGURATIONS

Collector Models	Filtration Area		Pleat Height		Cartridge Dimensions	
	ft²	m²	in	mm	in	mm
AerTable	106.0	9.9	2.0	50.8	12.74 x 26.0	323.6 x 660.4
Bin Vent (TBV)	106.0	9.9	2.0	50.8	12.74 x 26.0	323.6 x 660.4
CX Series	120.0	11.2	2.0	50.8	13.84 x 26.0	351.5 x 660.4
Downdraft Bench (DB)	120.0	11.2	2.0	50.8	13.84 x 26.0	351.5 x 660.4
Downflo® (DF)	106.0	9.9	2.0	50.8	12.74 x 26.0	323.6 x 660.4
Downflo® Containment System (DCS)	90.0	8.4	1.5	38.1	11.4 x 14.4 x 26.0	288.5 x 364.7 x 660.4
Downflo II (DFT)	120.0	11.2	2.0	50.8	13.84 x 26.0	351.5 x 660.4
Downflo Oval (DFO)	90.0	8.4	1.5	38.1	11.4 x 14.4 x 26.0	288.5 x 364.7 x 660.4
Downflo® Evolution (DFE)	120.0	11.1	2.0	50.8	13.74 x 13.74 x 26.0	349.1 x 349.1 x 660.4
Downflo WorkStation (DWS)	90.0	8.4	1.5	38.1	11.4 x 14.4 x 26.0	288.5 x 364.7 x 660.4
Downflo (SDF)	43.0	4.0	2.0	50.8	9.2 x 22.3	233.9 x 566.2
Environmental Control Booth (ECB)	106.0	9.9	2.0	50.8	12.74 x 26.0	323.6 x 660.4
MTD	106.0	9.9	2.0	50.8	12.74 x 26.0	323.6 x 660.4
ProBooth™	106.0	9.9	2.0	50.8	12.74 x 26.0	323.6 x 660.4
SiloAir	27.0	2.5	2.0	50.8	8.0 x 22.0	203.2 x 558.9
	39.0	3.6	2.0	50.8	8.0 x 32.0	203.2 x 812.8
TD Large	106.0	9.9	2.0	50.8	12.74 x 26.0	323.6 x 660.4
TD Small	39.0	3.6	2.0	50.8	7.9 x 16.0	201.4 x 406.4

* The Minimum Efficiency Reporting Value (MERV) of this filter cartridge has been determined through independent laboratory testing using ASHRAE 52.2 (2007) test standards. The MERV rating was determined at a face velocity of 118 feet per minute (36.0 meters per minute) and loading up to four inches (101.6 millimeters) water gauge. Actual efficiency of any filter cartridge will vary according to the specific application parameters. Dust concentration, airflow, particle characteristics, and pulse cleaning methods all affect filtration efficiency.

** Environmental conditions involving combinations of high temperature, corrosive material, and moisture can reduce media strength. Reduction in media strength may compromise cartridge integrity and performance.

*** A combination of chemicals may alter fiber resistance to the specified performance level. Chemical attack may compromise cartridge integrity and performance.

Significantly improve the performance of your collector with genuine Donaldson Torit replacement filters and parts. **Call Donaldson Torit at 800-365-1331.**

Important Notice

Many factors beyond the control of Donaldson can affect the use and performance of Donaldson products in a particular application, including the conditions under which the product is used. Since these factors are uniquely within the user's knowledge and control, it is essential the user evaluate the products to determine whether the product is fit for the particular purpose and suitable for the user's application. All products, product specifications, availability and data are subject to change without notice, and may vary by region or country.



Donaldson Company, Inc.
Minneapolis, MN
donaldson.com • shop.donaldson.com

North America
Email: donaldsontorit@donaldson.com
Phone: (USA): +1-800-365-1331 • (MX): +1-800-343-36-39

Australasia
Email: marketing.australia@donaldson.com
Phone: +61-2-4350-2000
Toll Free: (AU) +1800-345-837 • (NZ) +0800-743-387

F118125 ENG (02/20) Ultra-Web SB Cartridge ©2011-2020 Donaldson Company, Inc.

Donaldson, Torit, Ultra-Web, Downflo, ProBooth and the color blue are marks of Donaldson Company, Inc. All other marks belong to their respective owners.

China
Email: info.cn@donaldson.com
Phone: +86-400-820-1038

Donaldson Europe B.V.B.A.
Email: IAF-europe@donaldson.com
Phone: +32-16-38-3811

India
Email: info.difs@donaldson.com
Phone: +91-124-4807-400 • +18001035018

Japan
Email: jp-ndi.fsw@donaldson.com
Phone: +81-42-540-4112

Korea
Email: iaf-kr@donaldson.com
Phone: +82-2-517-3333

Latinoamerica
Email: IndustrialAir@donaldson.com
Phone: +52-449-300-2442

South Africa
Email: SAMarketing@donaldson.com
Phone: +27-11-997-6000

Southeast Asia
Email: IAF.SEA@donaldson.com
Phone: +65-6311-7373