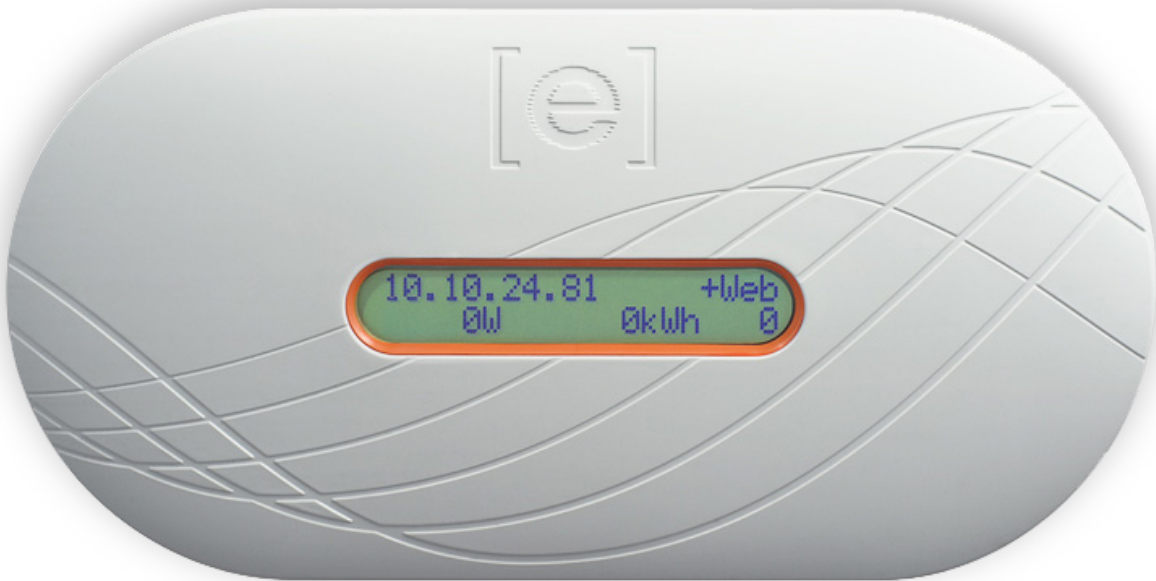


Envoy Communications Gateway™



The Enphase **Envoy® Communications Gateway** provides network access to the solar array enabling comprehensive monitoring and management of an Enphase system.

Solar professionals and system owners can easily check the status of their Enphase System using the Envoy's LCD display or get more detailed performance data via Enlighten® Software, included with purchase of Envoy.

SMART

- Includes web-based monitoring and control
- Integrates with smart energy devices
- Automatically upgrades and sends performance data

SIMPLE

- Plug and play installation
- Flexible network configuration
- No additional AC wiring required

SCALABLE

- Residential or commercial ready out of the box
- Supports up to 600 microinverters

INTERFACE

Power Line Communications	Enphase proprietary
Local Area Network (LAN)	10/100 auto-sensing, auto-negotiating, 802.3

LAN CONNECTION OPTIONS

Cable Assembly, Ethernet, RJ45, Orange, 10ft	Included with model ENV-120
Power line communication bridge pair	Optional, order EPLC-01
Wireless N USB adapter (802.11b/g/n)	Optional, order WF-01

POWER REQUIREMENTS

AC supply	120 VAC, 60 Hz
Power consumption	2.5 watts typical, 7 watts maximum

CAPACITY

Number of microinverters polled	Recommended up to 600
---------------------------------	-----------------------

MECHANICAL DATA

Dimensions (WxHxD)	222.5 mm x 112 mm x 43.2 mm (8.8" x 4.4" x 1.7")
Weight	340 g (12 oz.)
Ambient temperature range	-40°C to +65°C (-40° to 149°F)
Cooling	Natural convection—no fans
Enclosure environmental rating	Indoor NEMA 1

FEATURES

Standard warranty term	Two years
Compliance	UL 60950-1, EN 60950-1, CSA22.2 No. 60950-1 and IEC 60950-1, FCC Part 15 Class B
API available	System-level production data

To learn more about Enphase Microinverter technology, visit enphase.com