

**PMD Remote Mount
Brackets + Service Tip**

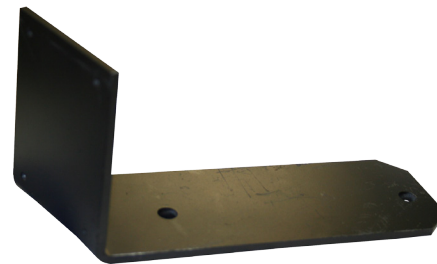


DIPACO / DTech now offers two remote mount brackets for the DTech pump mounted driver (PMD). Part number DT650032 is for pickup truck applications; part number DT650033 is for van applications. The remote mount brackets are intended to allow the PMD to be replaced without removing the intake manifold to mount the PMD onto the GM 6.5L DS fuel pump. This can save you about an hour when replacing a PMD.

SERVICE TIP:

Before replacing the PMD, keep in mind a new calibration resistor with the same value as the one currently installed must be installed into the new PMD electrical connection. This means you must have access to a scan tool to determine what resistor is currently installed. Otherwise, the old resistor must be removed from the old PMD that is mounted to the DS pump; this would require removal of the intake manifold.

The resistor tells the PCM what fuel calibration map to use. Since the DTech PMD is not sensitive to the heat generated when mounted onto the DS pump, if you have to remove the manifold, you might as well mount the PMD onto the DS pump.



DT650032



DT650033

An Employee Owned Company

12693 Old Virginia Road
Reno, NV 89521
800.648.4720

DIPACO.com
DTECHPRODUCTS.com