

Injector + Return Line Kits For GM 6.6L LB7 Duramax Engine



DIPACO
DIESEL
PARTS
U S A

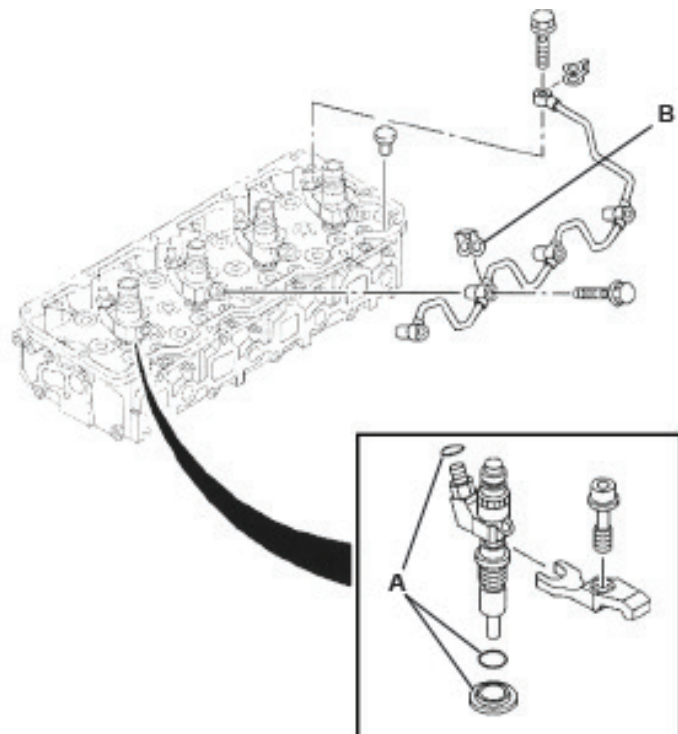
To help in the installation of injectors back into GM 6.6L LB7 Duramax engines, DIPACO / DTech now has available a number of installation kits.

Injector Installation Kit (DT660019): This provides the external injector o-rings and nozzle washer. See A items below.

Return Line Kit (DT660020): When removing and installing an injector, the fuel return line connected to the four injectors on one side of the engine needs to be removed and then reinstalled. Because of this the banjo washers need to be replaced. This kit contains four banjo washers to connect the injectors to the fuel return line plus the return line connection banjo washer. See B items below.

Injector Installation / Return Line Kit (DT660021): This kit is a combination of four DT660019 kits and one DT660020 kit.

Injector Installation / Return Line / Lower Rocker Cover Gasket Kit (DT660022): This kit takes the DT660021 kit and adds to it the DT660018 valve rocker arm cover gasket. See DIPACO Product Information Bulletin FI-169 for more information on the DT660018 valve rocker arm cover gasket.



An Employee Owned Company

12693 Old Virginia Road
Reno, NV 89521
800.648.4720

DIPACO.com
DTECHPRODUCTS.com

See reverse for Additional Resources.

DIPACO

PRODUCT INFORMATION

Additional Resources

DTech Product Information Bulletins:

FI-317 - New Super Kit For GM 6.6L LB7 Duramax Injector Installation

FI-316 - Valve Cover Gasket / Injector Installation Kit For GM 6.6L LB7 Duramax

FI-315 - Valve Cover Isolator + Injection Line Oil Seal For GM 6.6L LB7 Duramax

FI-169 - Valve Rocker Arm Cover Gasket For GM 6.6L LB7 Duramax Engine

DIESEL FUEL PUMPS, INJECTORS, AND ACCESSORIES

Supplying The Diesel Aftermarket Since 1948