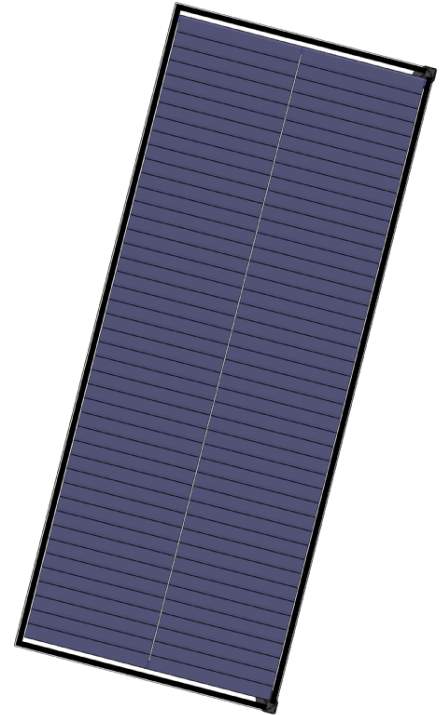


Frameless Double Glass Module

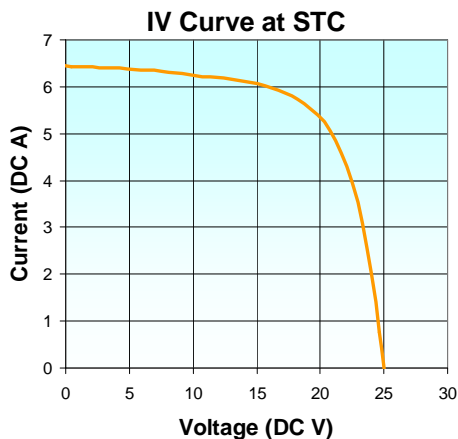
Key Features

- Designed for large scale, low cost installations
- Durable glass/glass construction ensures long lifetime in harsh environments
- Corner junction box design minimizes wiring and BOS costs
- Bypass diodes reduce losses due to shading
- UL 1703, IEC 61646 and IEC 61730 Certifications
- 5/10/25 year power warranty (please see warranty for detail)



Electrical Performance*	MR-107	MR-100
Rated Peak Power – P_{MPP}	107 W	100 W
Maximum Power Voltage – V_{MPP}	20.1 V	19.2 V
Maximum Power Current – I_{MPP}	5.33 A	5.20 A
Open Circuit Voltage – V_{OC}	25.2 V	24.7 V
Short Circuit Current – I_{SC}	6.58 A	6.50 A
Maximum Series Fuse Rating	25 A	25 A
Maximum System Voltage (US/IEC)	600V /1000V	600V /1000V

* At Standard Test Conditions: 1000 W/m², 25°C cell temperature, AM 1.5 spectrum



Thermal Characteristics	
Nominal Operating Cell Temperature	49°C
Temperature Coefficient of Power	-0.45%/°C
Temperature Coefficient of V_{oc}	-0.36%/°C

Physical and Mechanical Specifications	
Length	1611 mm
Width	665 mm
Depth	7.5 mm (28 mm including junction box)
Weight	18 kg
Junction Box / Output Terminal Type	2 corner connection boxes MC4 Locking Connector
Frame	None
Cell Type	Copper Indium Gallium Diselenide (CIGS)
Static Load	5400 N/m ²
Warranty Term	5/10/25 year power output, 5 year workmanship*
Certifications	UL1703, IEC 61646, IEC 61730

* Please see full warranty for details

