

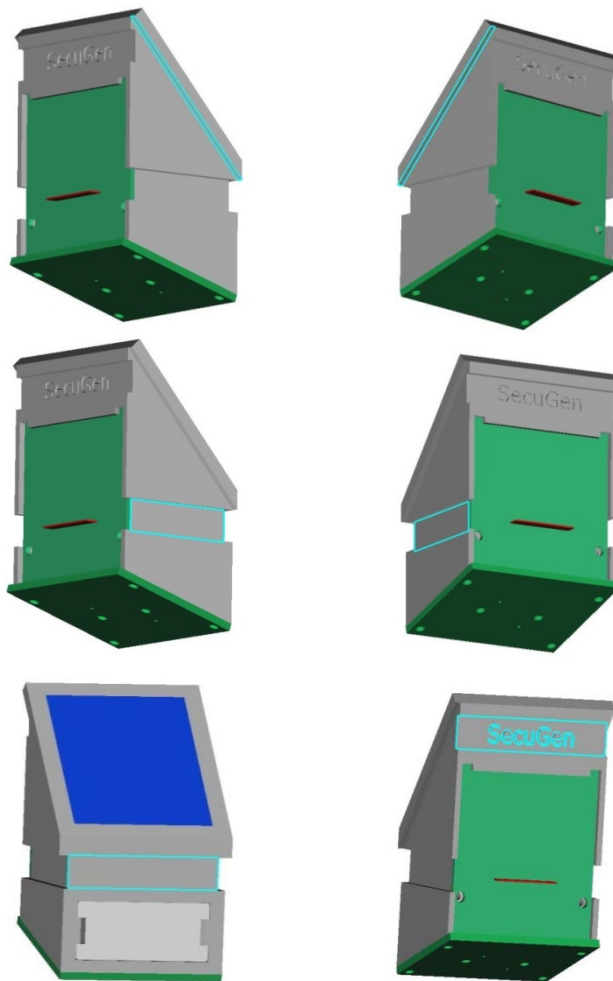
How to Use the Mounting Guides on SecuGen Fingerprint Modules

Applicable Models: FDUxx, OPPxx, SDOPPxx, SDUxx, U20, U20-WR

This document shows how to use the guides of a SecuGen fingerprint module for mounting the module securely into a user's case.

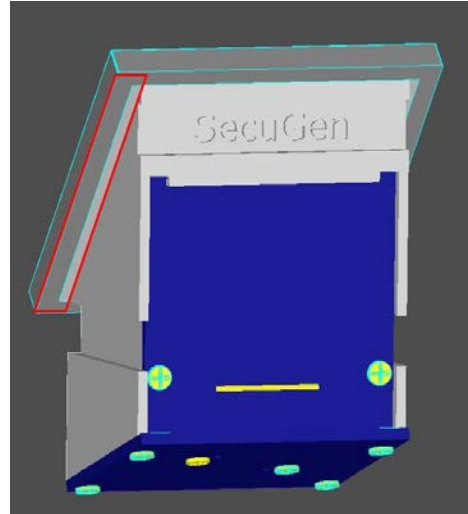
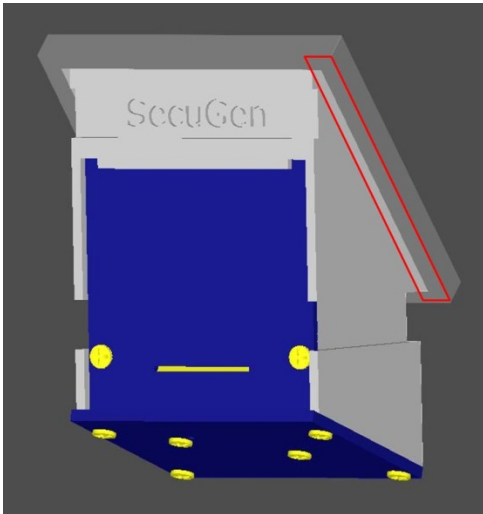
1. For U20 modules

Mounting guides are indicated by the sky-blue colored lines in the images below.

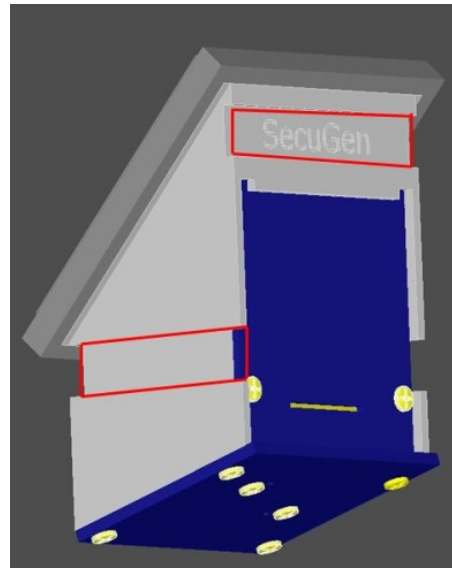
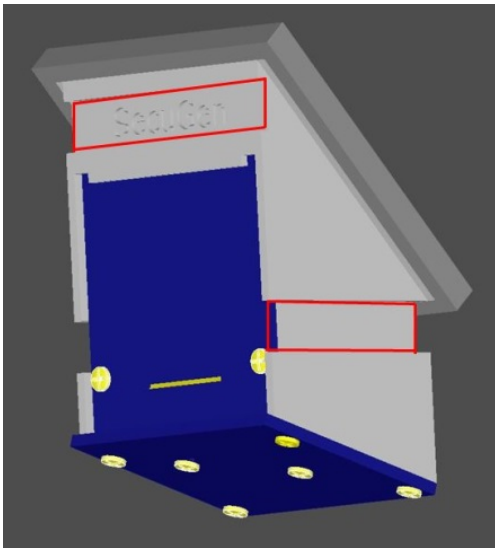


2. For U20-WR modules

Mounting guides are indicated by the red colored lines in the images below.

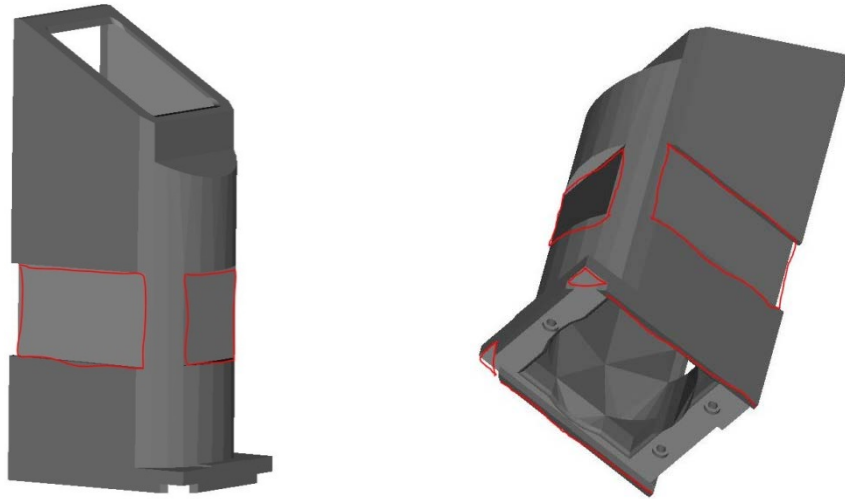


Both module and module cover need to be supported.



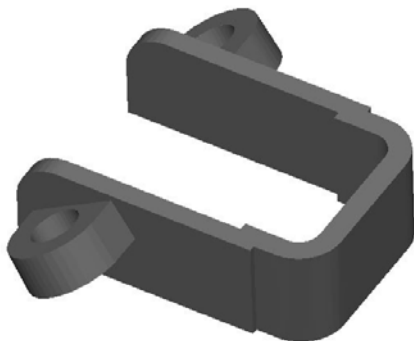
3. For SDOPPxx / OPP-type and SDUxx / FDU-type modules

Mounting guides are indicated by the red colored lines in the images below.



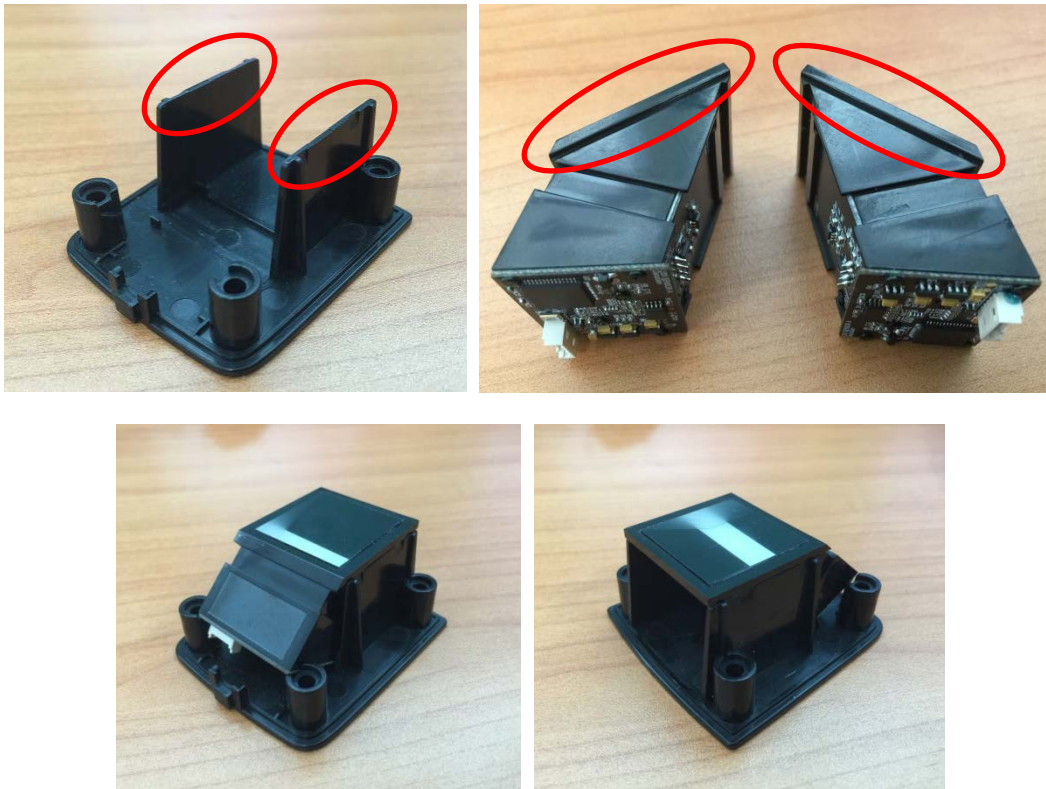
4. Using brackets for mounting the module

A mounting bracket should support the back and sides of the module.



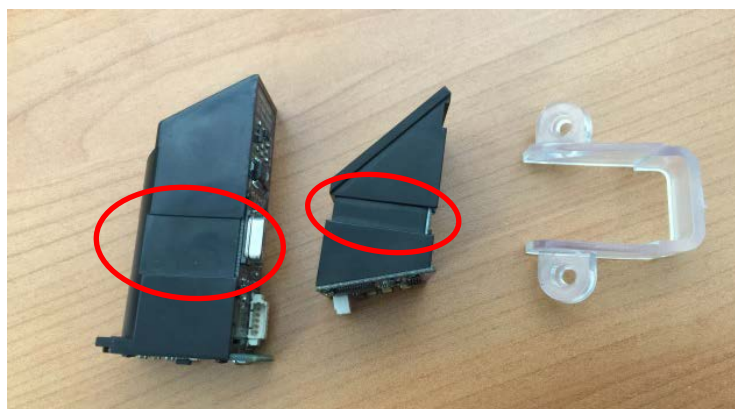
Example #1

Support the module from the bottom of the case

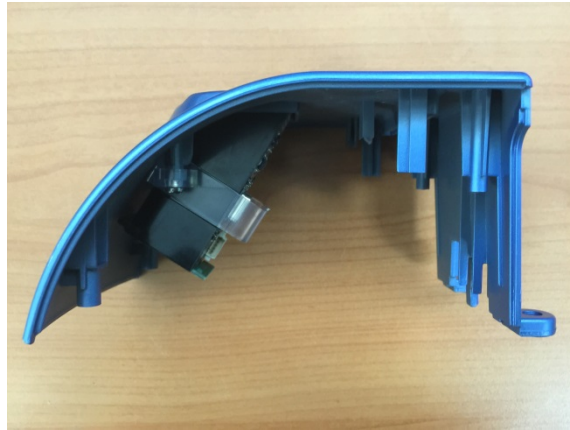


Example #2

Use a bracket to hold the side mounting guides of the module



Mount the module beneath the upper part of a case using the bracket



Support the bottom of the module

